



**孕龍科技股份有限公司**  
**ZEROPLUS TECHNOLOGY CO.,LTD**

# Instrument Business Department

## SPDIF Specification

Edition: V1.01

# Content

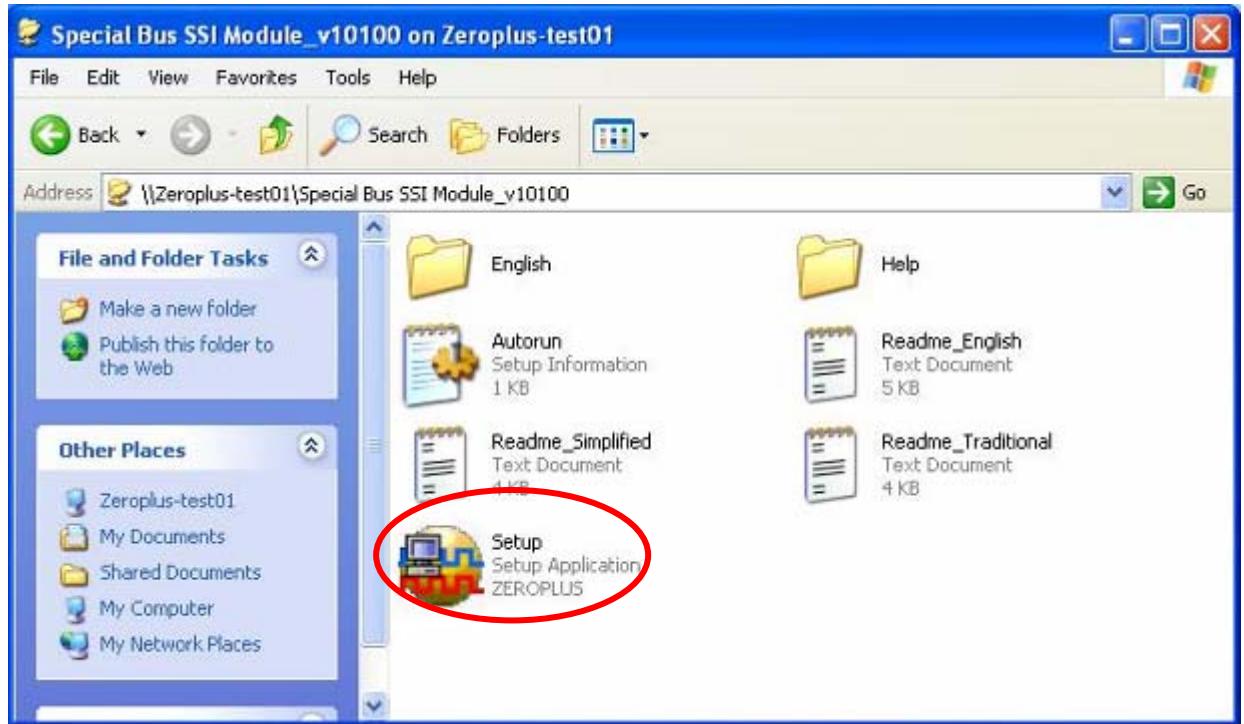
<b>1</b>	<b>Software Installation</b> .....	<b>3</b>
<b>2</b>	<b>User Interface</b> .....	<b>7</b>
<b>3</b>	<b>Operating Instructions</b> .....	<b>9</b>

## 1 Software Installation

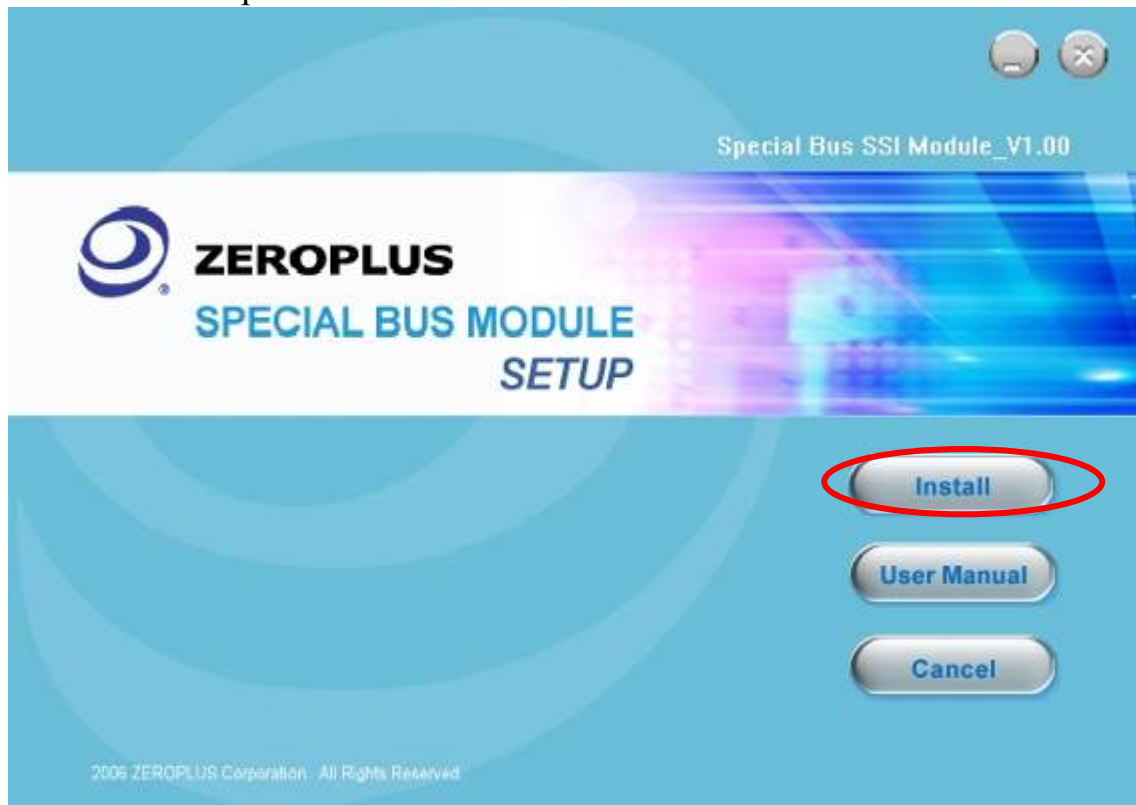
Please install software by the following steps:

Remark: Because all bus installation programs are the same, you can install according to the program, take SSI bus installation for example, and other bus can refer to the following installation.

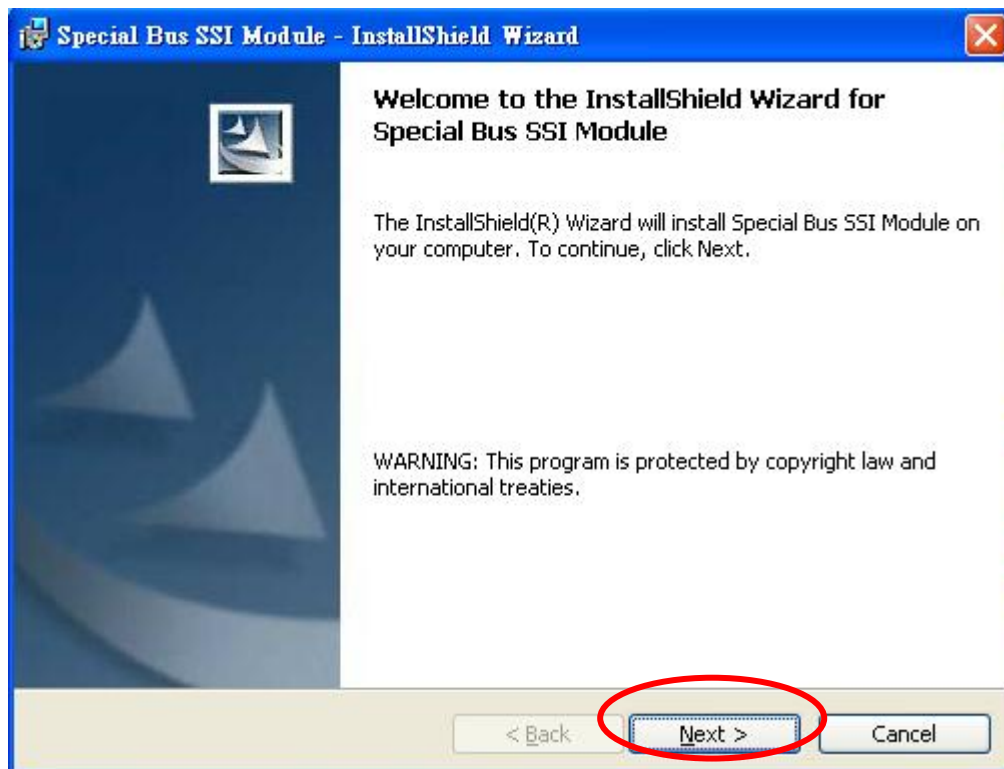
### STEP 1. Install SSI Bus Module



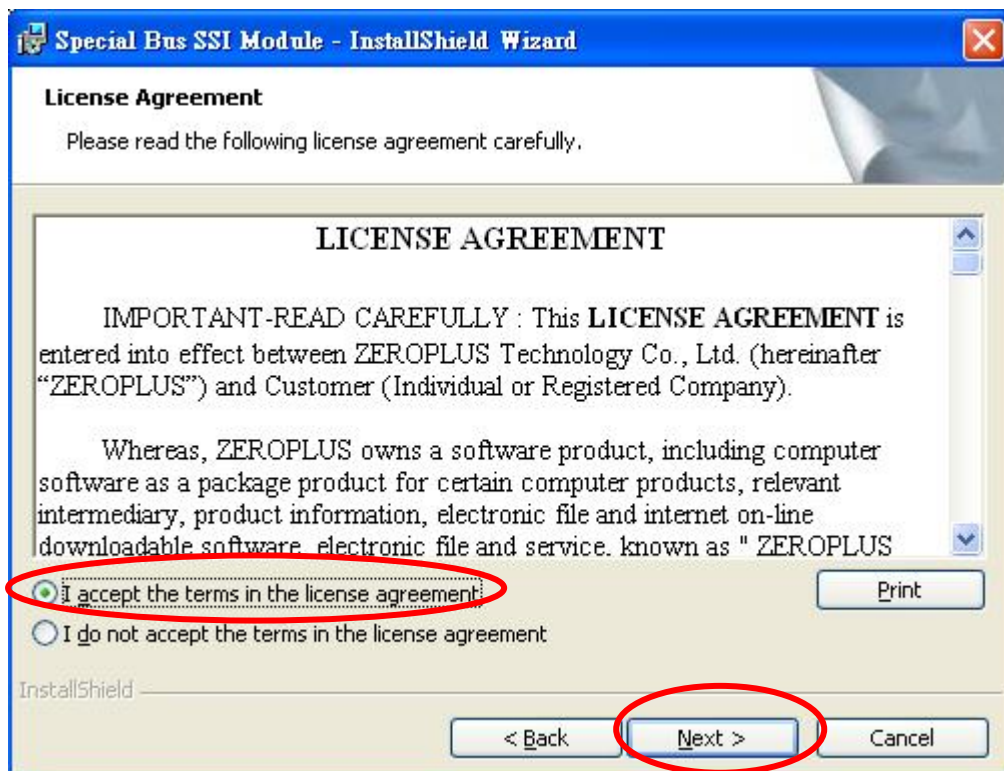
### STEP 2. Implement Install.



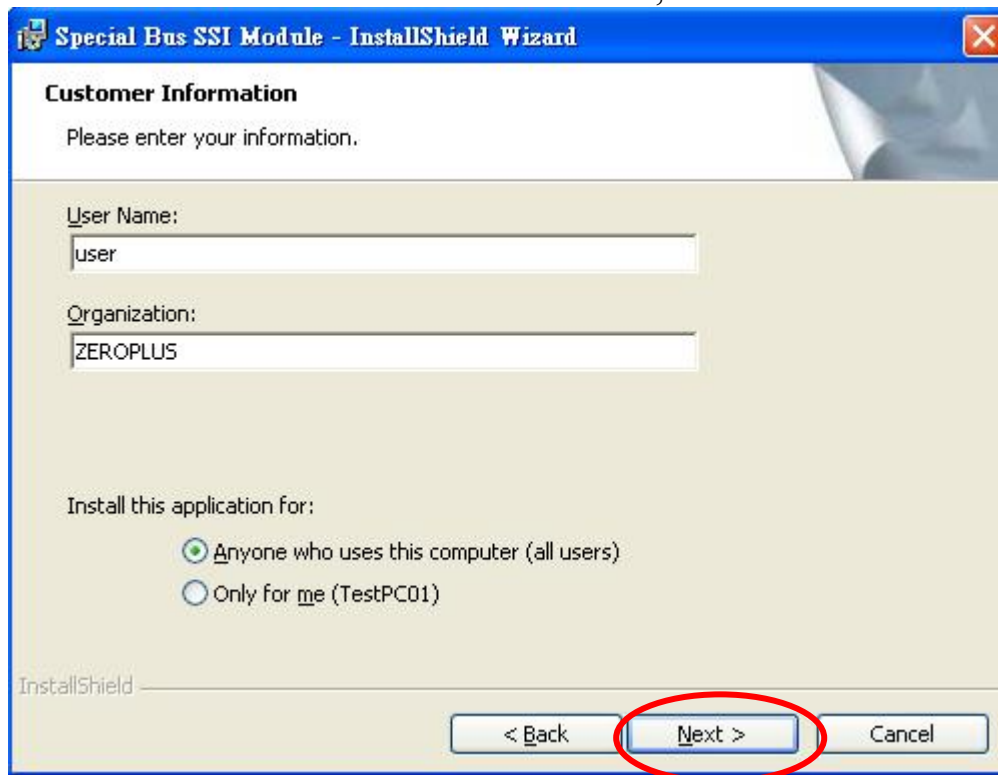
**STEP 3. Click Next.**



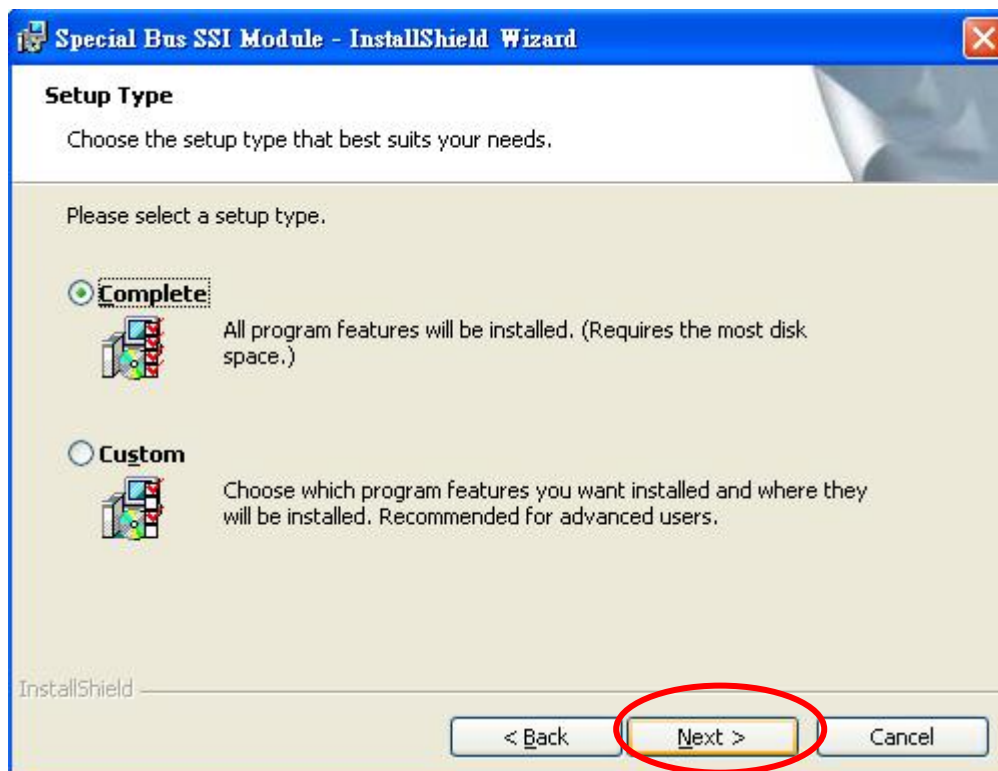
**STEP 4. Select "I accept the terms in the license agreement", and then click Next.**



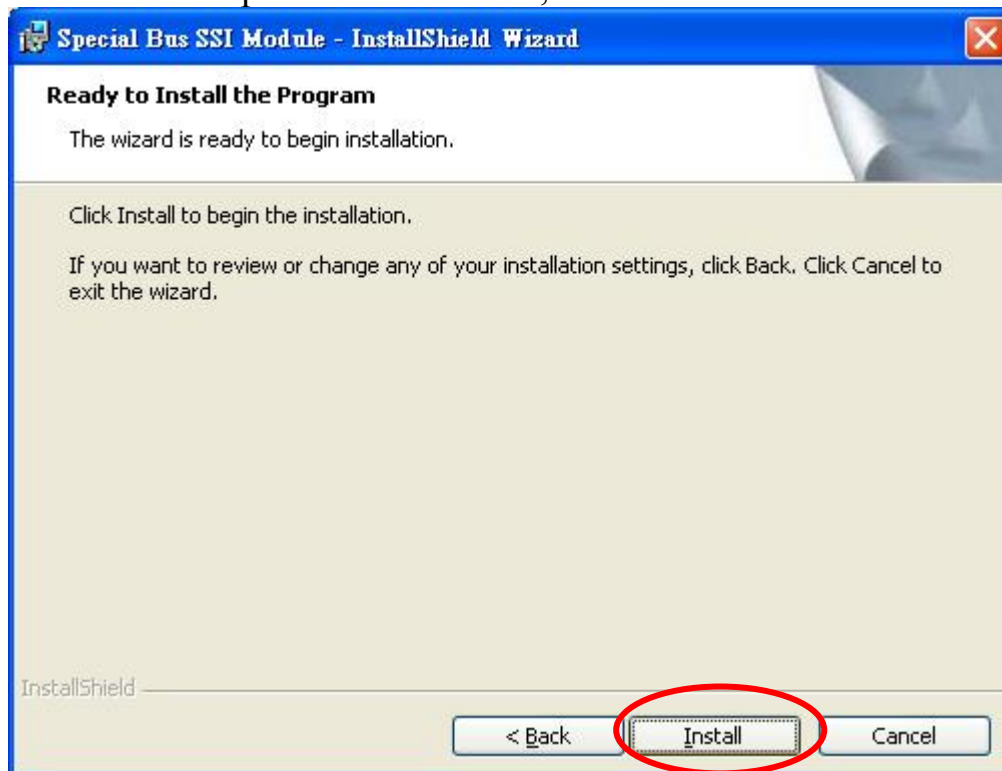
**STEP 5. Fill in Correlative Information, Click Next.**



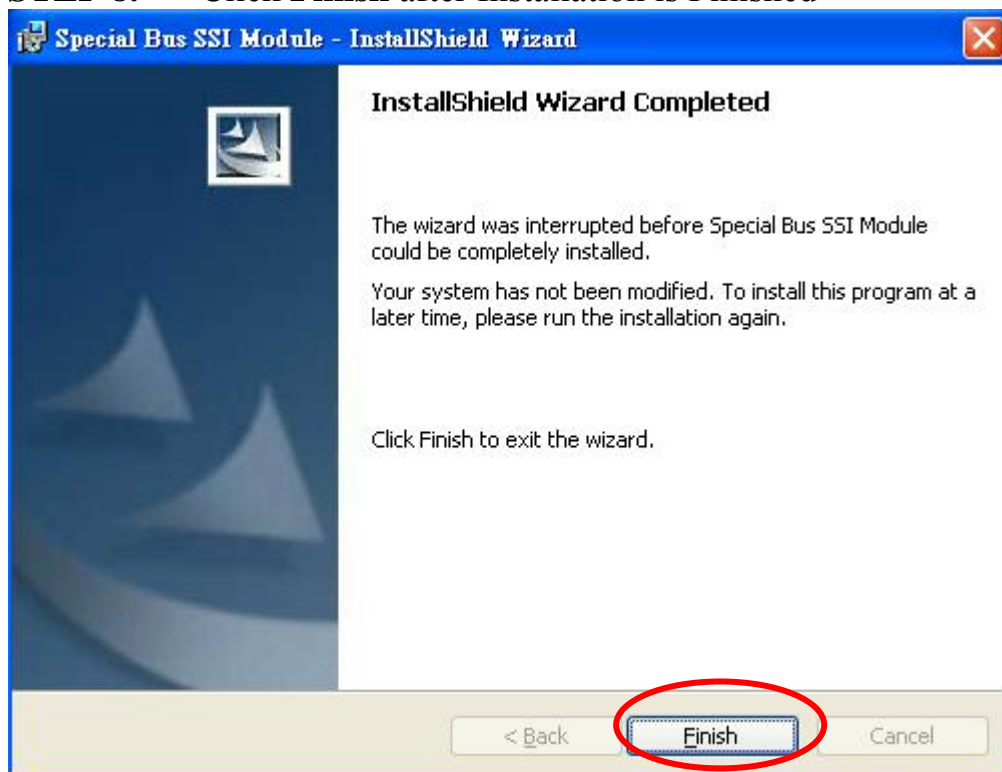
**STEP 6. Click Install.**



**STEP 7.** Implement Installation, and Click **Install**.

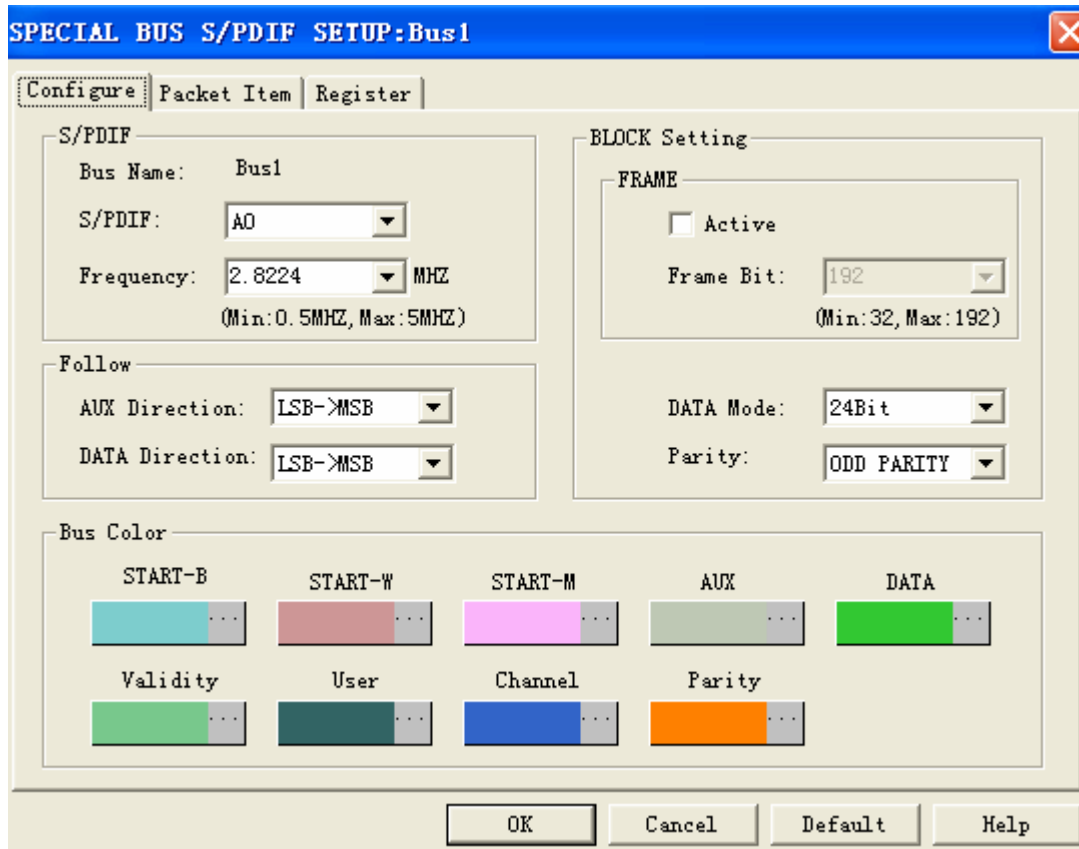


**STEP 8.** Click **Finish** after Installation is Finished



## 2 User Interface

As to the setup department, SPDIF correlative setup can refer to the figure interface as below.  
**SPDIF Setup Page**



**SPDIF:** SPDIF setting:

Bus Channel Select: Presets as A0

Frequency:

2.8224MHZ 3.0720MHZ 2.0480MHZ (Presets as 2.8224MHZ)

**DATA Mode:**

24bit, 20bit, 16bit. (Presets as 24 位)

**DATA Direction:**

LSB→MSB, MSB→LSB. (Presets as LSB→MSB)

**AUX Direction:**

LSB→MSB, MSB→LSB. (Presets as LSB→MSB)

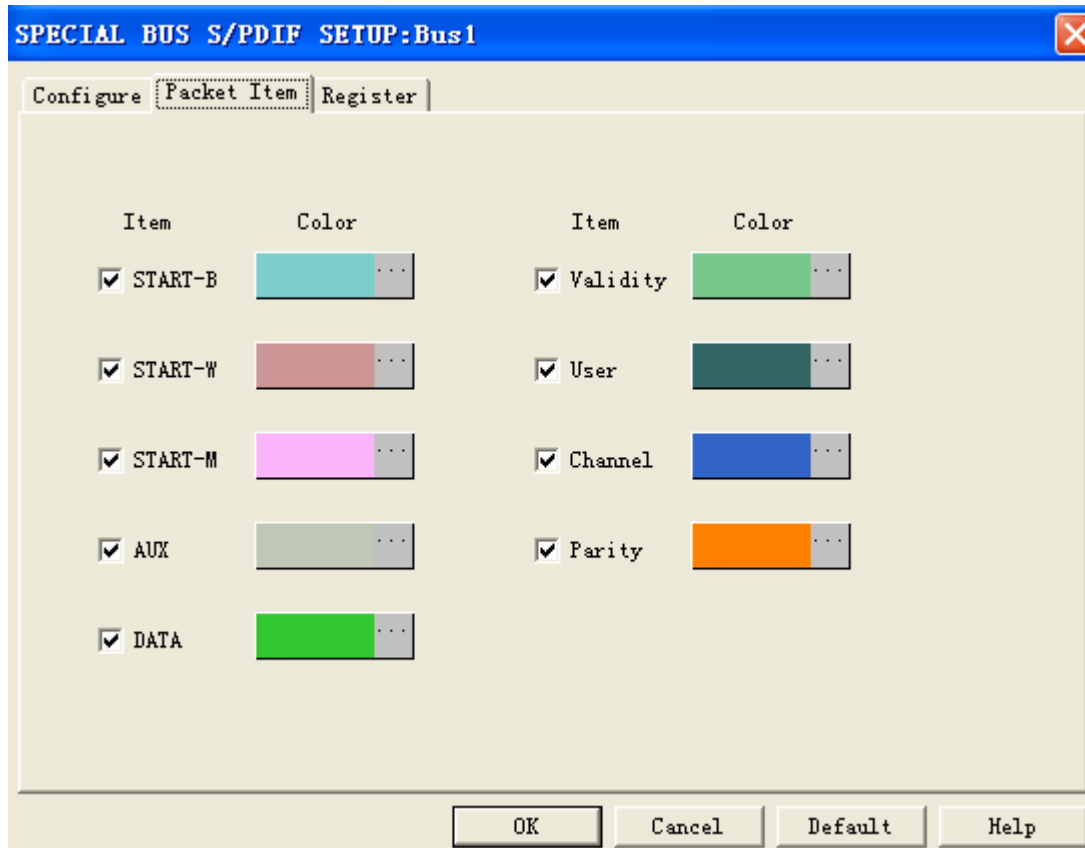
**Frame:**

If you select this function, it strictly decodes according to BLOCK format protocol, if you don't select this function, it can decode as long as it accords to Sum Frame format. Usually the range of BLOCK is 32 ~ 192Frame (Generally BLOCK is 192) (The column presets as Not Select.)

**Odd/Even Parity:**

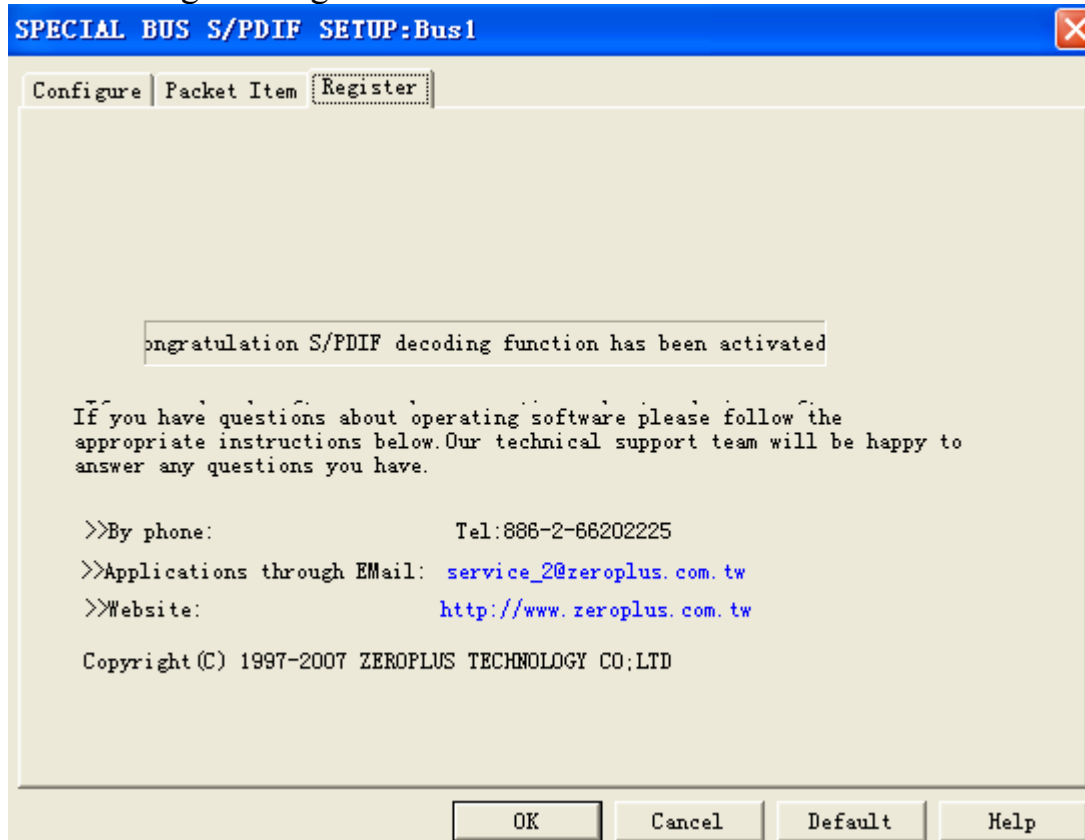
NONP PARITY, ODD PARITY and EVEN PARITY (Presets as ODD PARITY)。

**SPDIF Packet Page**



Packet's color can be adjusted according user select correlative color.

### SPDIF Register Page

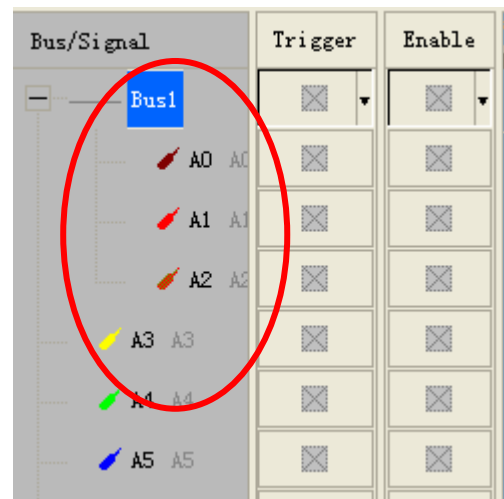
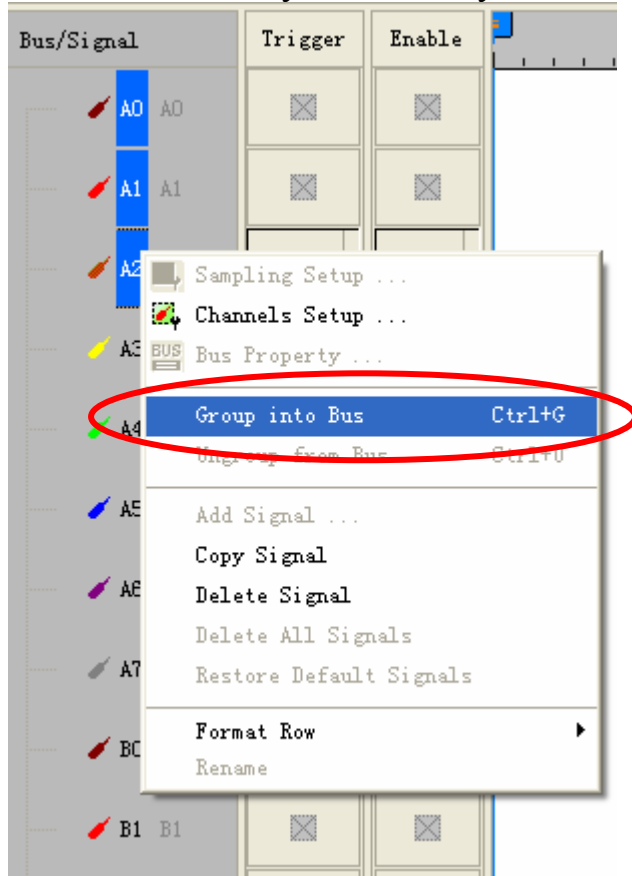


The Register part supplies the company's details, user can dial the telephone or inquire about the correlative information when you have correlative question.

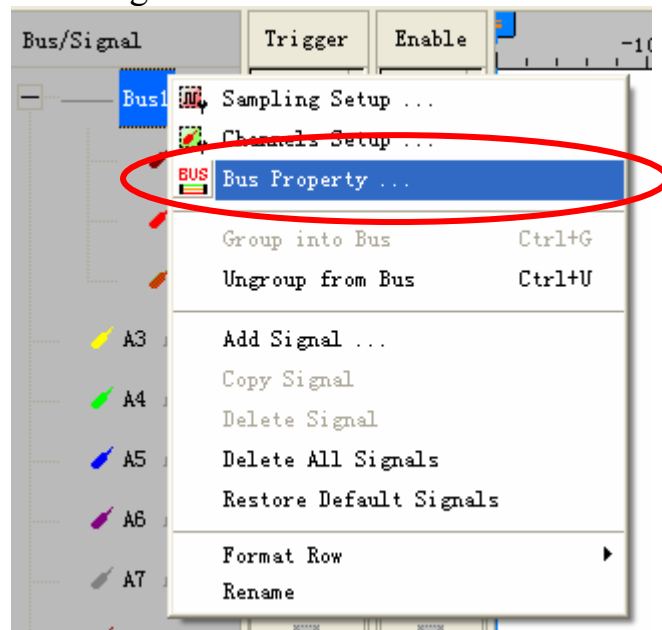


### 3 Operating Instructions

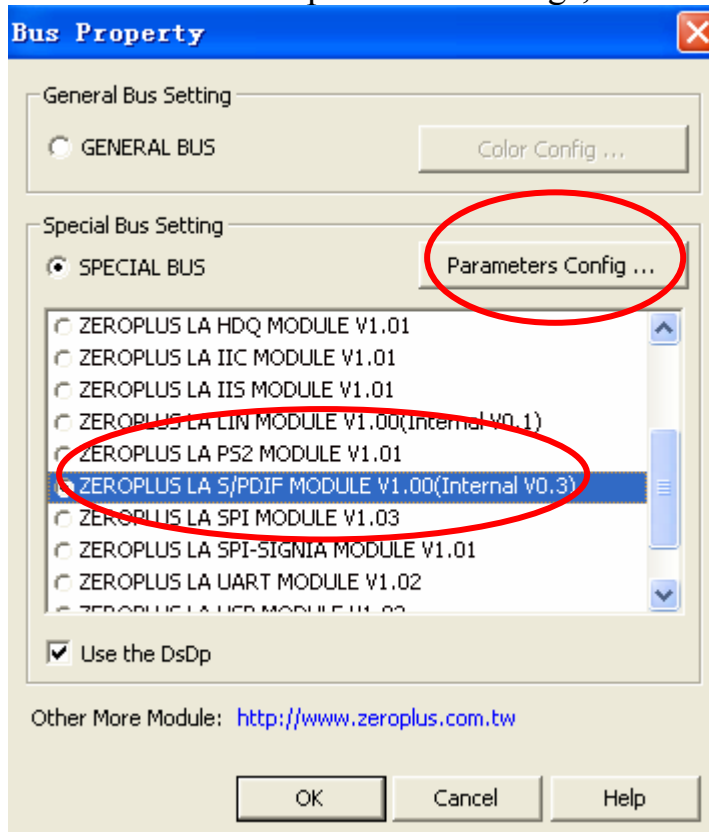
**STEP 1.** Firstly set the analyzed channel into normal bus.



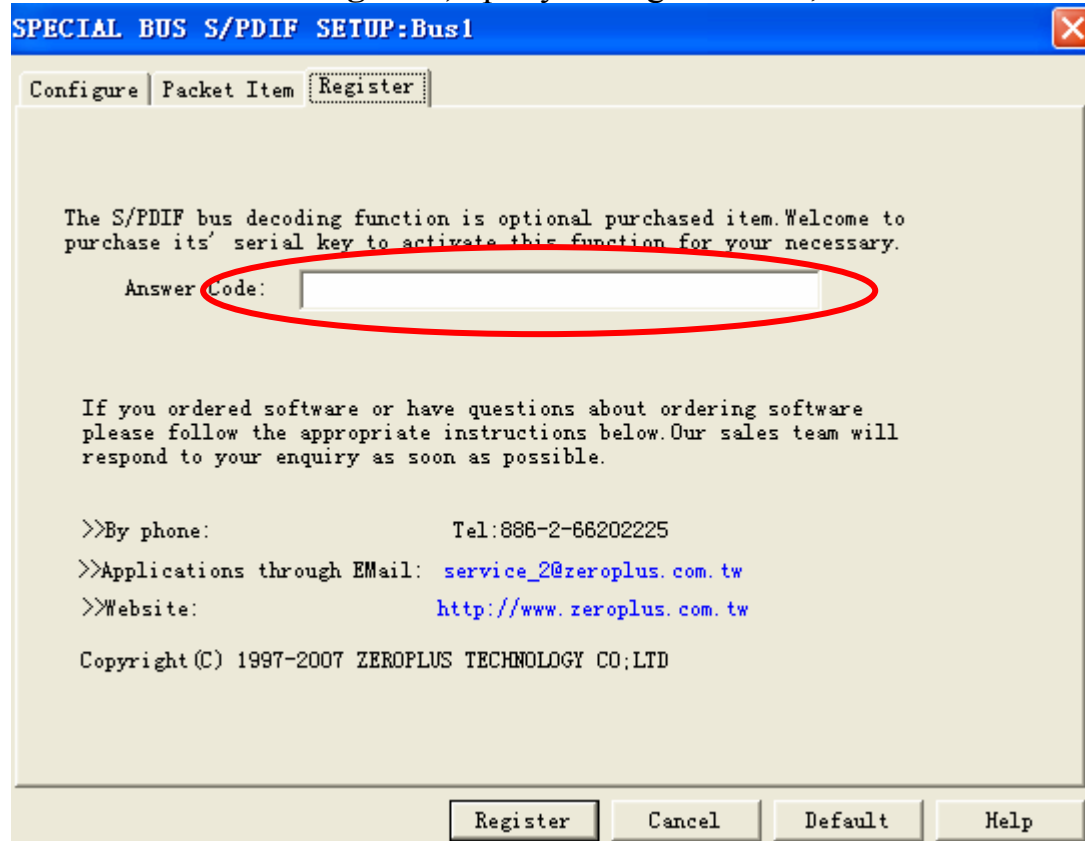
**STEP 2.** Right click **Bus Channel** and select **Bus Properties** to create bus setting



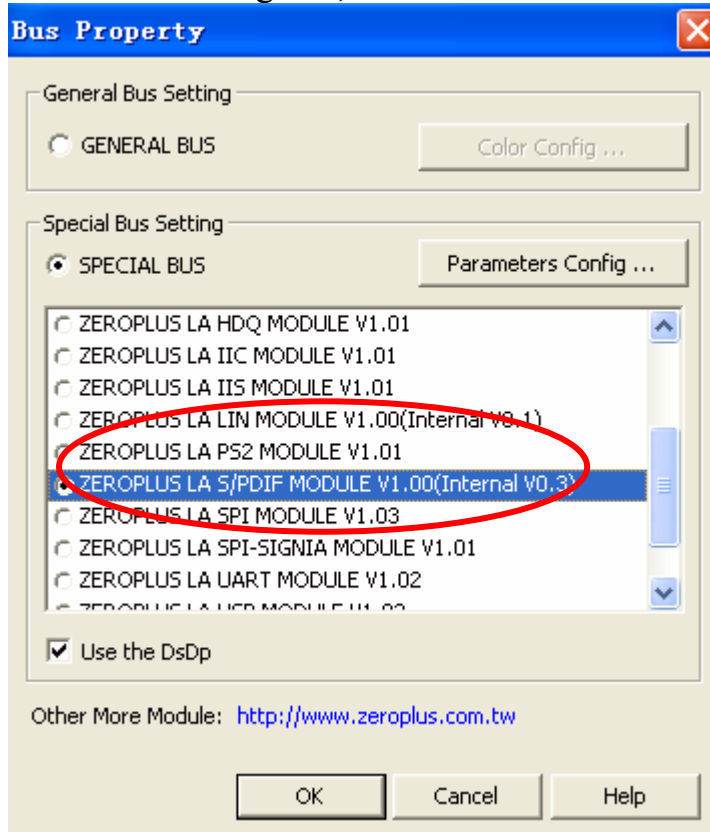
**STEP 3.** From special bus settings, select **SPDIF** and click **Parameters Config**.



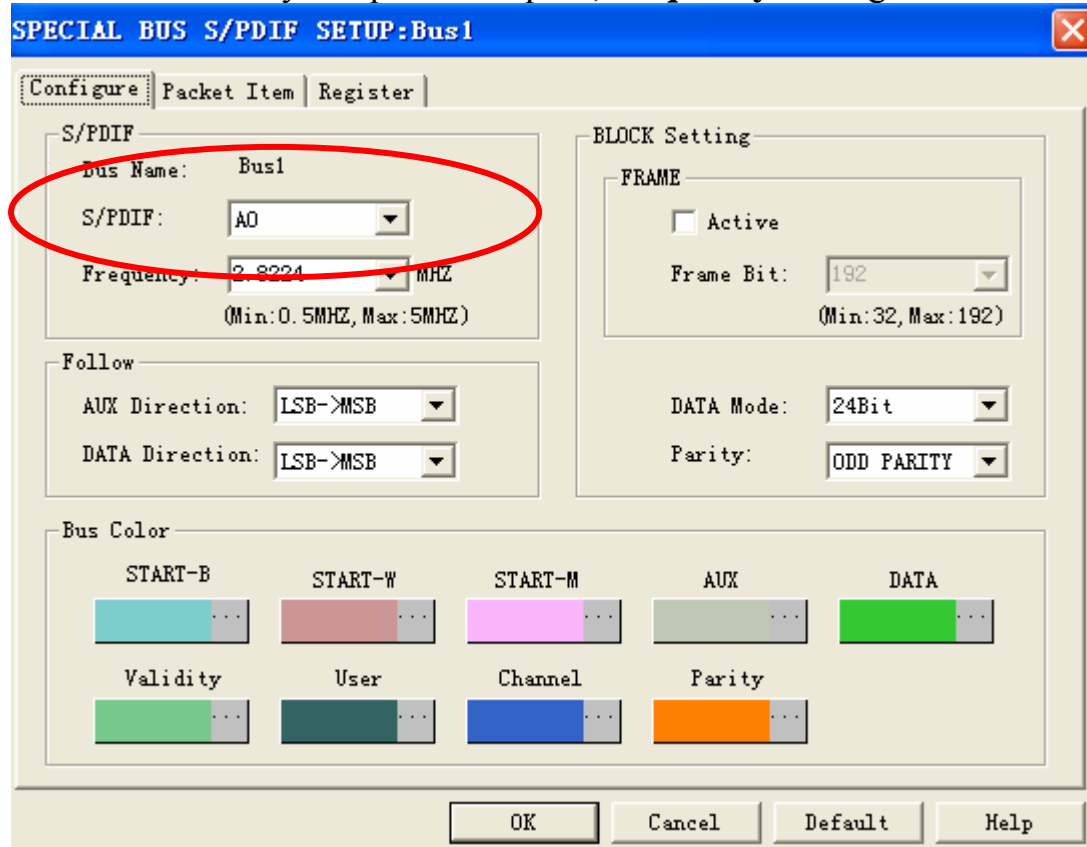
**STEP 4.** Select **Register**, input your register code, and then click **Register**



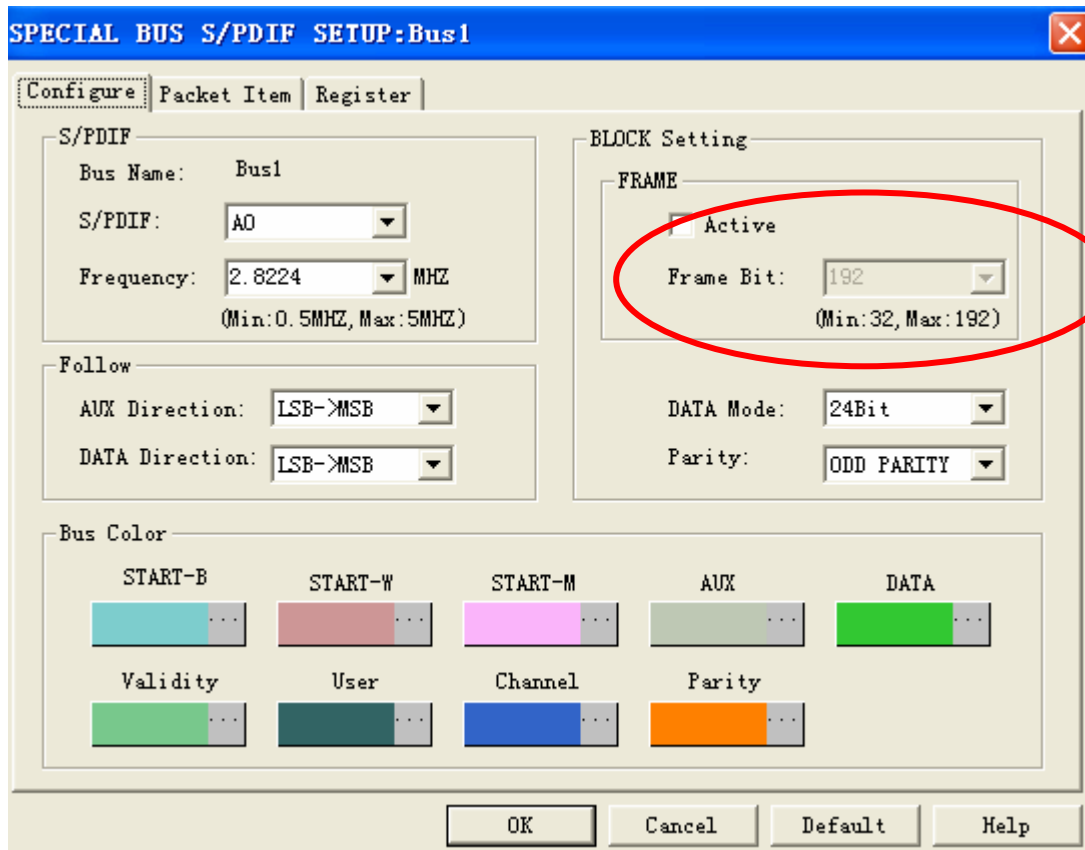
**STEP 5.** After register, click **Parameters Config** and set **Special Bus Parameters**.



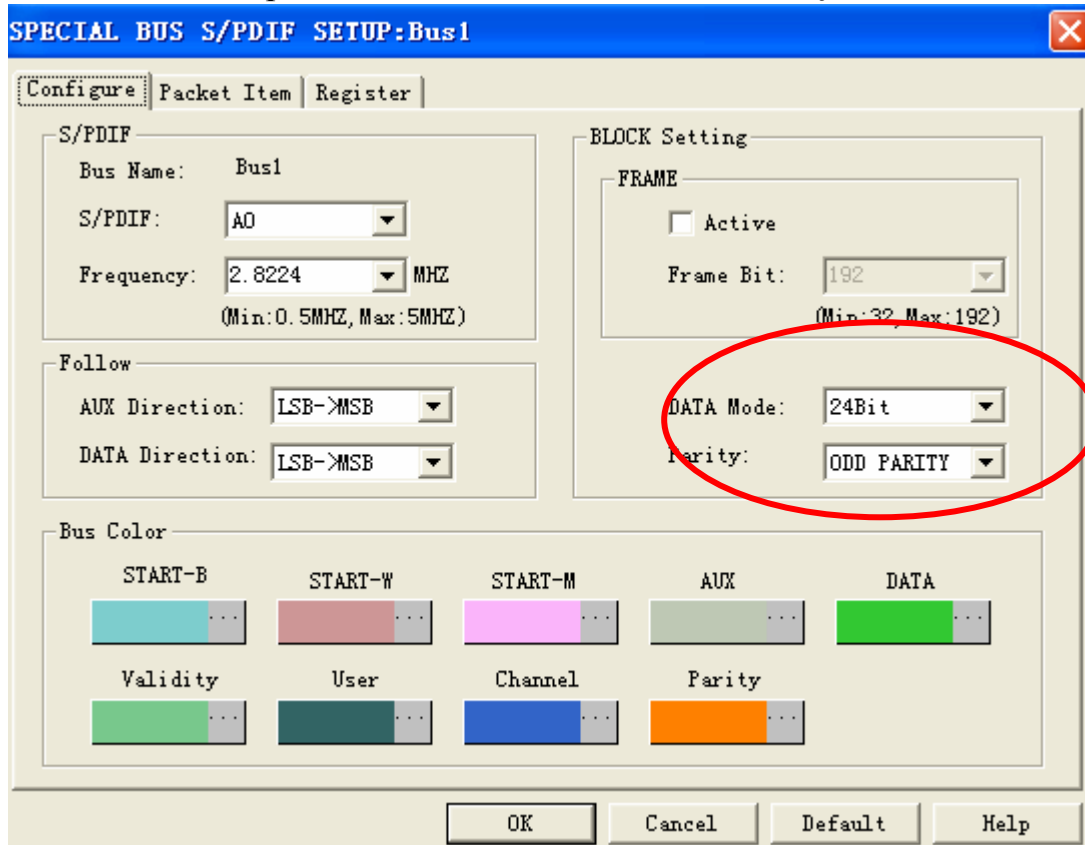
**STEP 6.** Firstly setup **S/PDIF** part, **Frequency Setting**



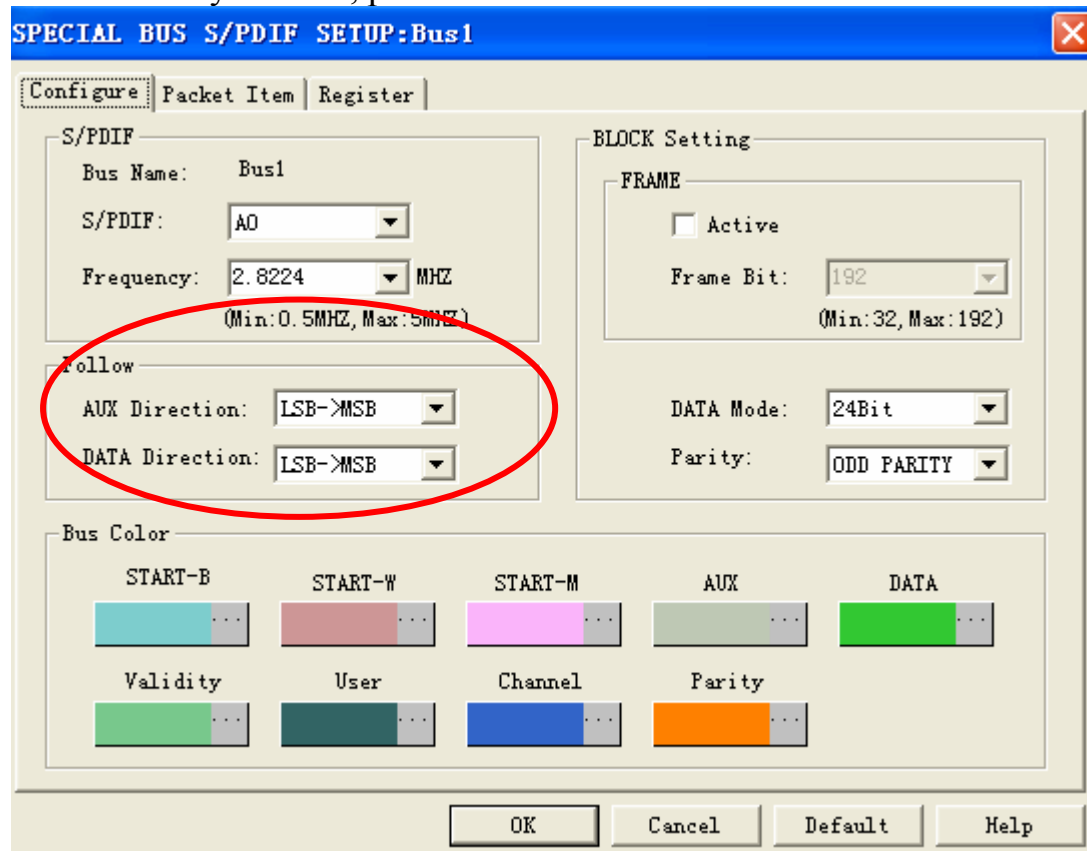
**STEP 7.** Select **BLOCK Setting**, whether active **Frame Bit** (Range Min:32,Max:192)



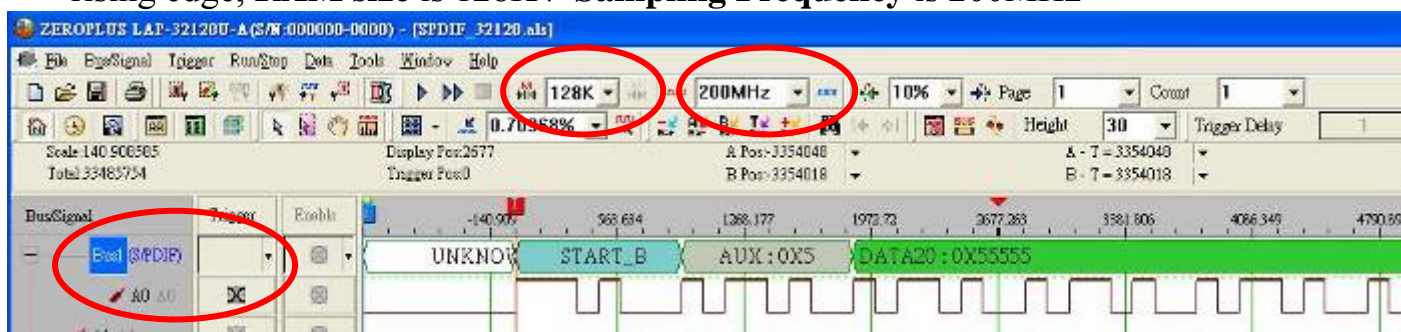
**STEP 8.** Setup **DATA Mode**, **ODD/EVEN Parity**.



**STEP 9.** As to data setting aspect, user can set AUX direction and DATA direction by himself, presets them as **LSB->MSB**.



**STEP 10.** Bus Decoding Finished Figure, **Setting Condition** is triggering at CLK rising edge, **RAM size** is 128K、**Sampling Frequency** is 200MHz



Packet List Figure and Waveform unfurled Figure as below:

