



孕龍科技股份有限公司
ZEROPLUS TECHNOLOGY CO.,LTD

Instrument Business Department

LIN BUS Specification

Version: V1.0

Content

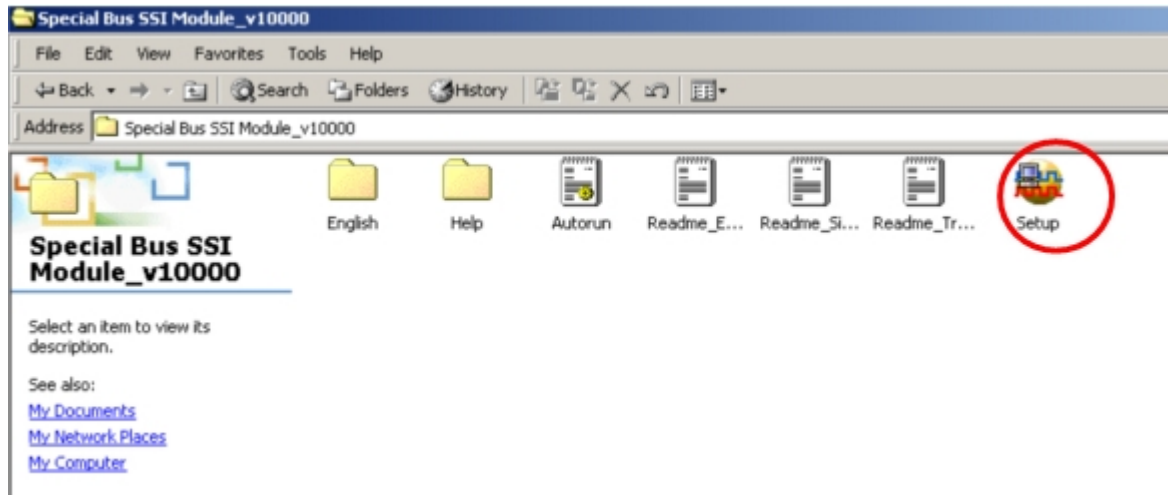
1	Software Installation.....	3
2	User Interface	8
3	Operating Instructions	9

1 Software Installation

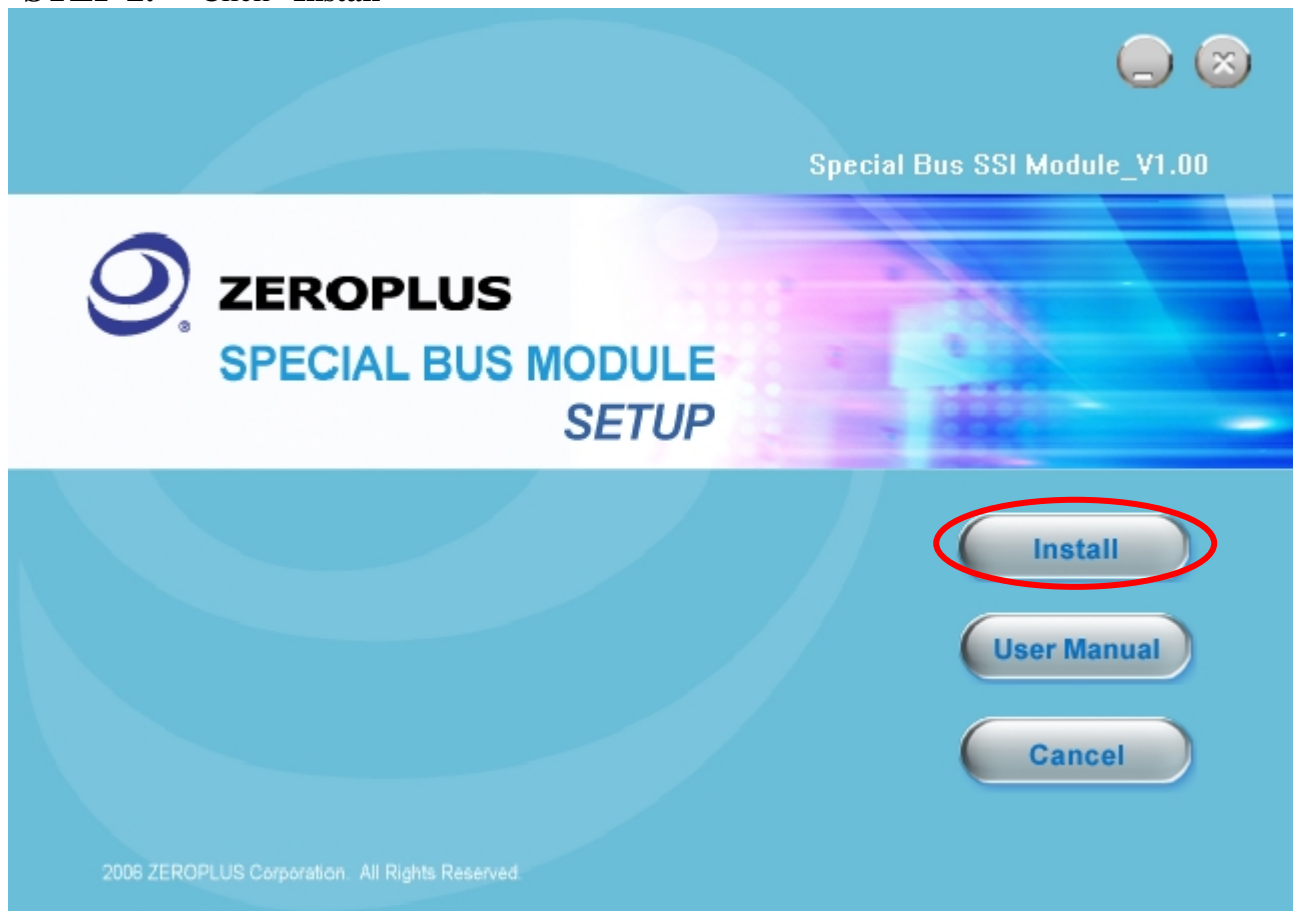
Please install software by the following steps:

Notice: The installed steps to set up all buses are the same; you can complete installation by following procedures. Below images are examples to install SSI bus.

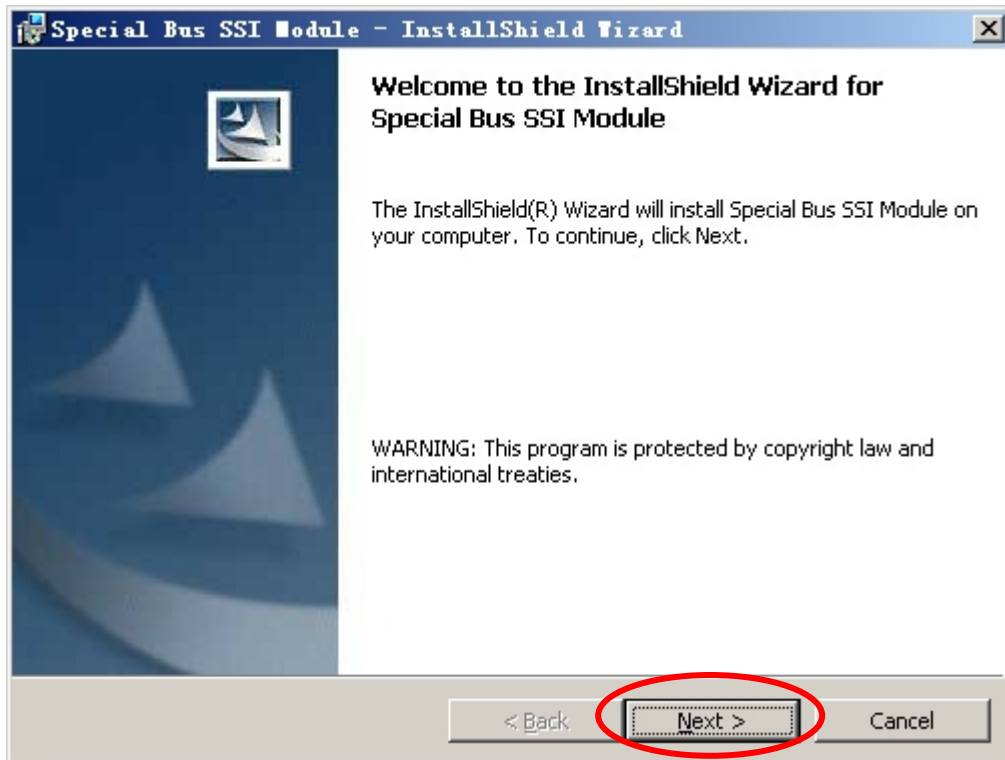
STEP 1. Install LIN Bus Module



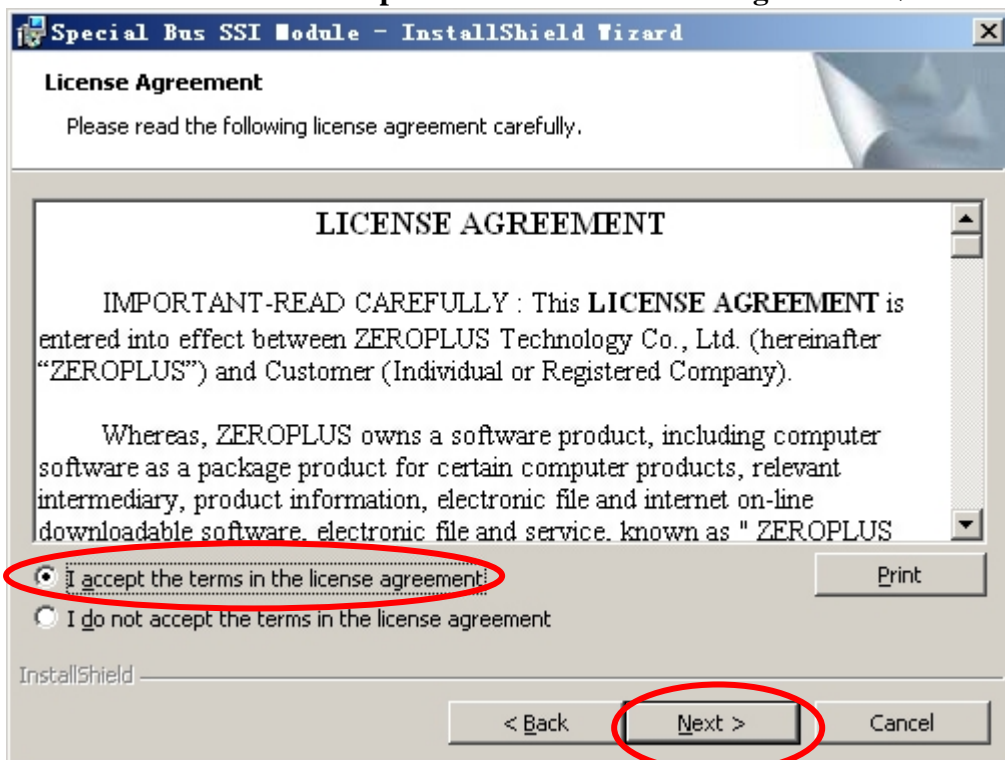
STEP 2. Click "Install"



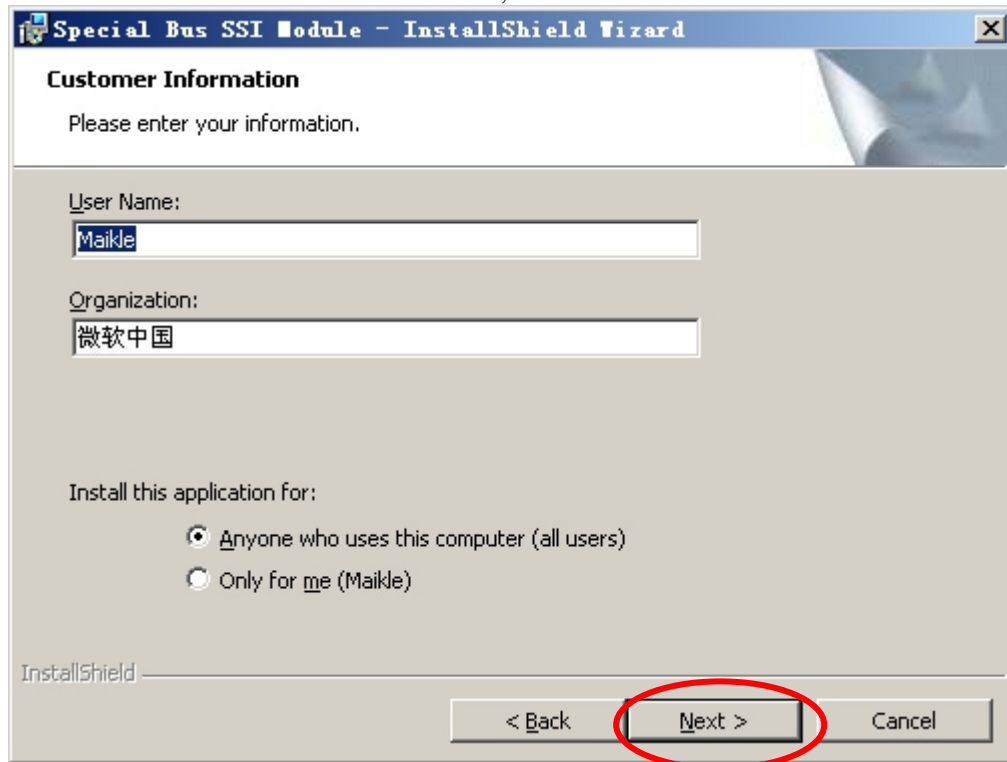
STEP 3. Click “Next”



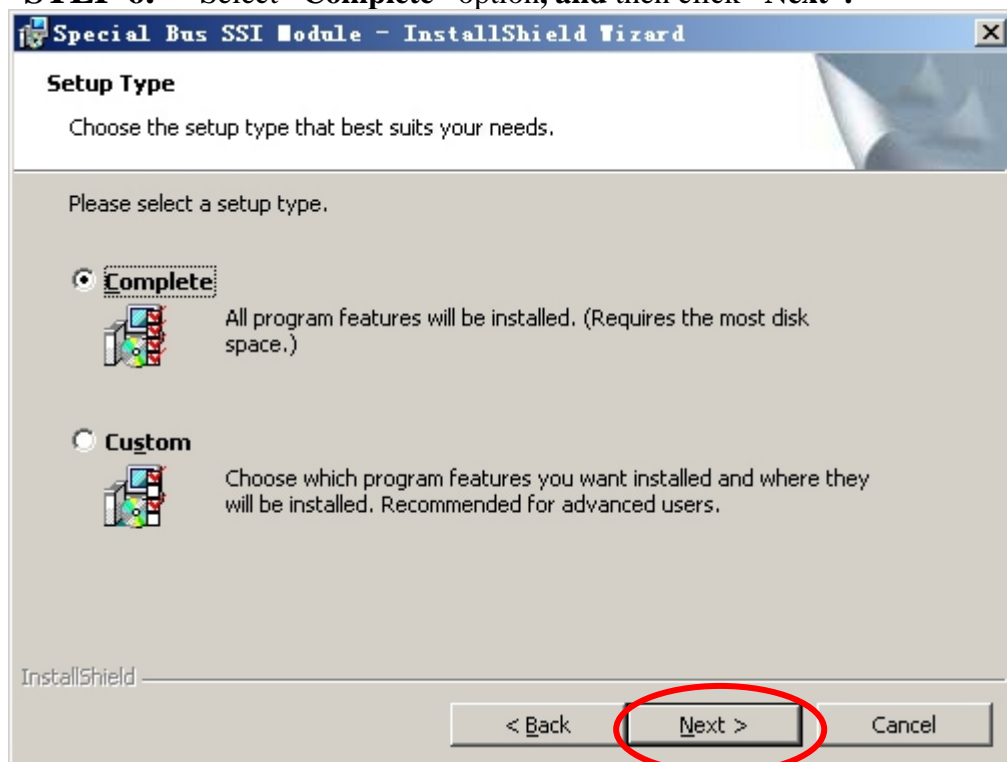
STEP 4. Select “I accept the terms in the license agreement”, and then click “Next”.



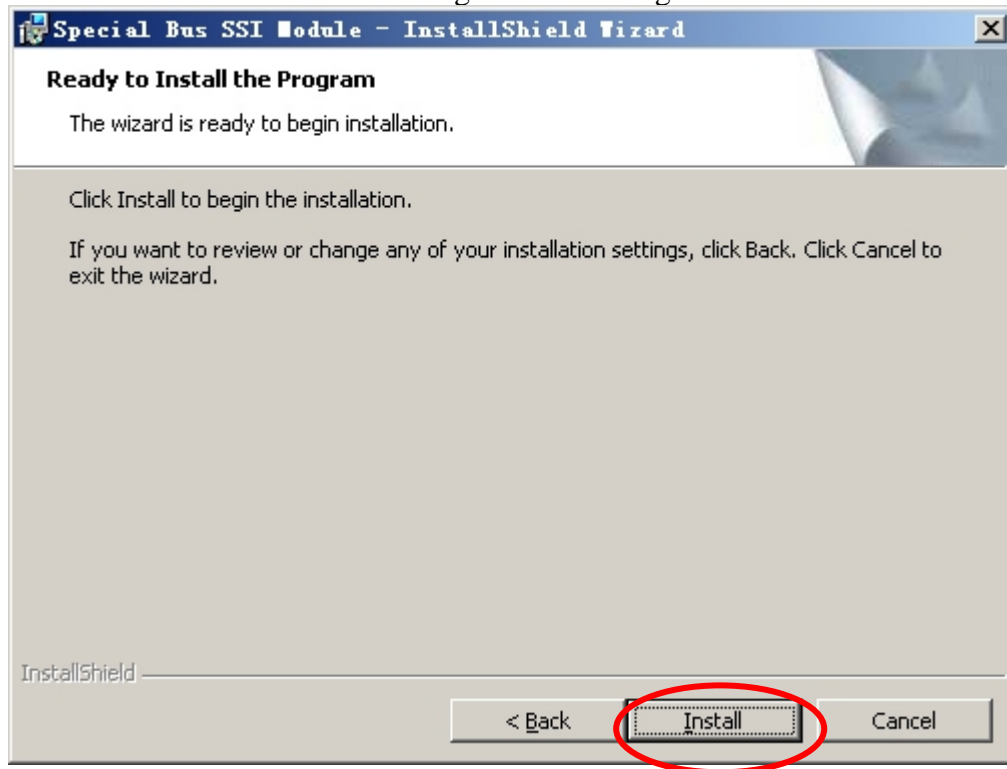
STEP 5. Fill in user Information, and then click “Next”.



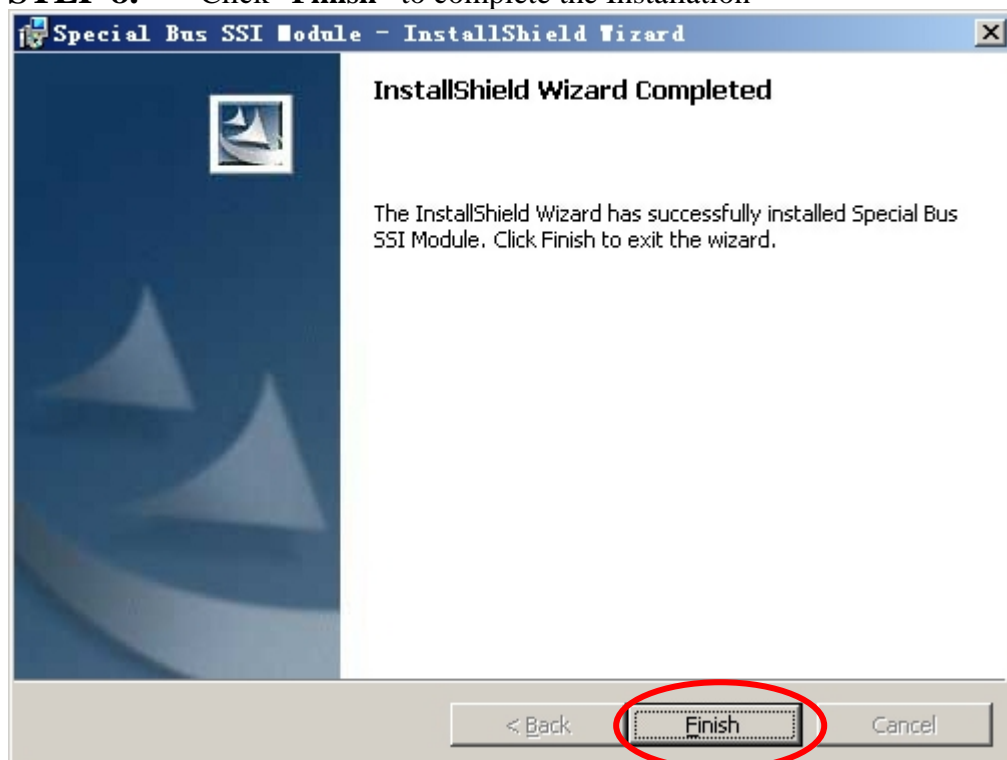
STEP 6. Select “Complete” option, and then click “Next”.



STEP 7. Click **Install** to begin the Installing.

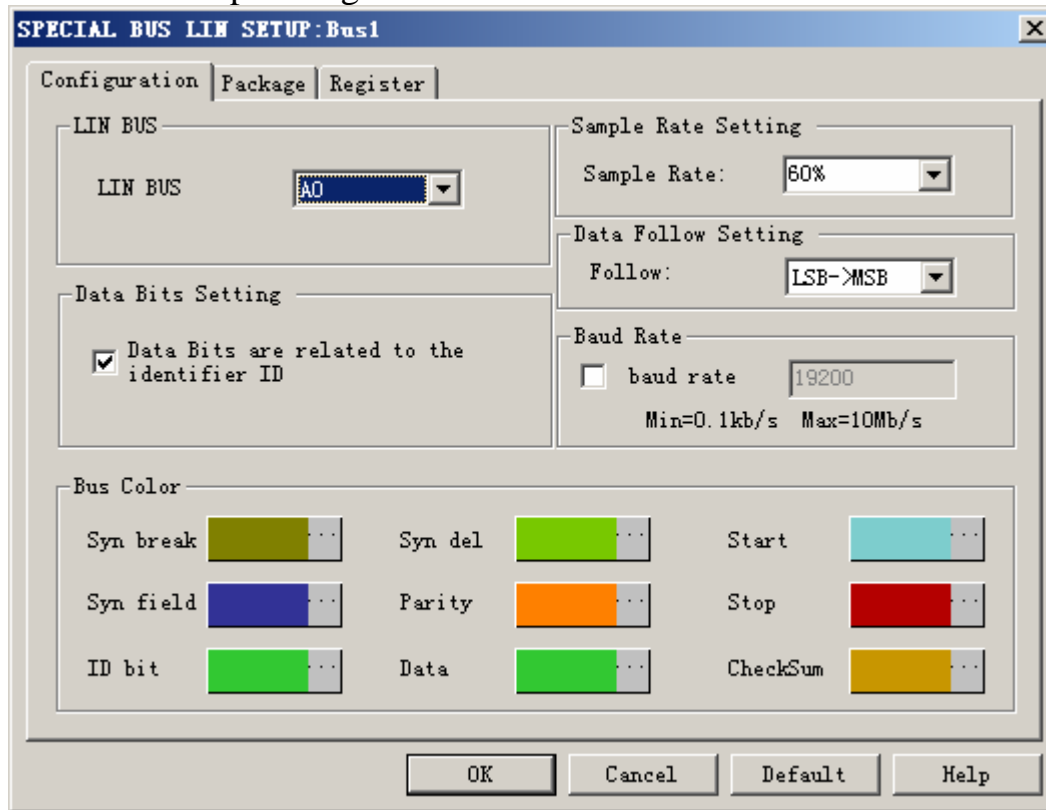


STEP 8. Click **“Finish”** to complete the Installation



2 User Interface

Please refer to image below to select options of setting LIN BUS.
LINBUS Setup Dialog Box for Bus 1



LIN BUS: The default is A0.

Sampling Rata Setting : It can be set at the range of 20%–80%, The default is 60%.

Data Bits Setting:

When Data Bits are related to the identifier ID is selected, it means that the data bits are related to the identifier ID. The corresponding data bits can be decoded when this option is selected, the default is the option selected.

Data Following Setting:

The default direction is LSB → MSB, including SYN FIELD, ID BIT, CHECKSUM, DATA.

Please pay attention that ID BIT+PARITY=ID FIELD.

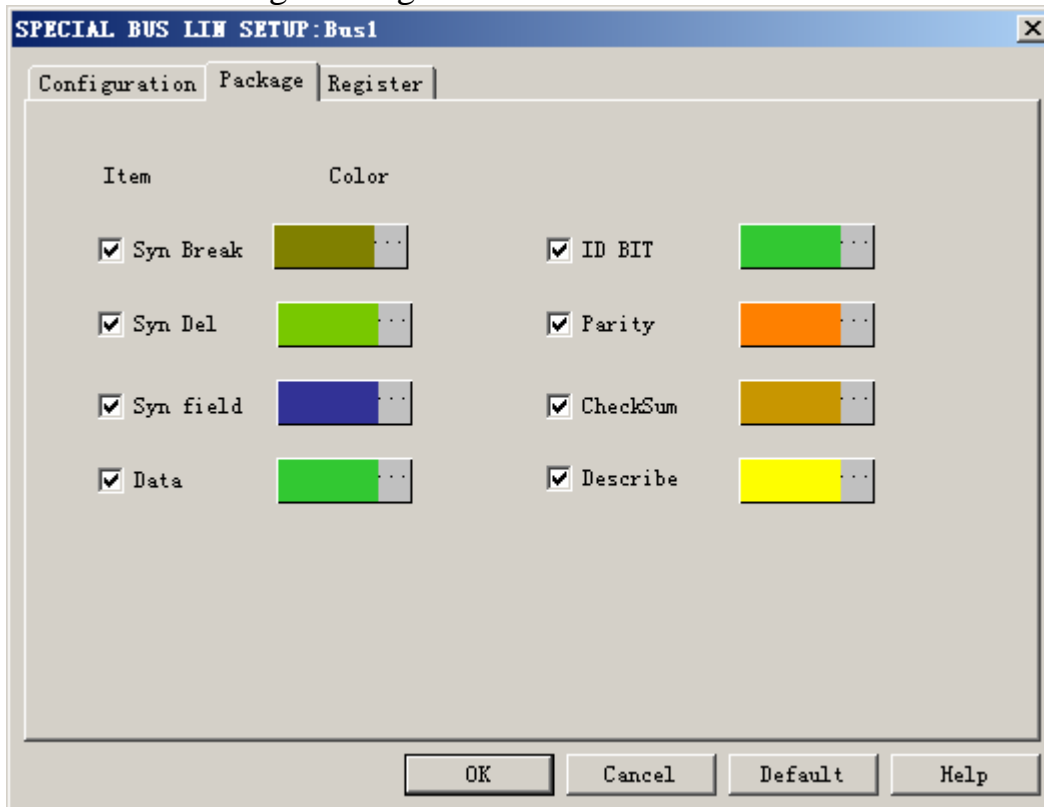
Baud Rate (Correcting function)

When the Know Baud Rate is selected, the input /output signal will be corrected. The calculation method is $1/\text{baud rate} = T (\text{synbit}/8)$ as same as forgoing formula.

Bus Color:

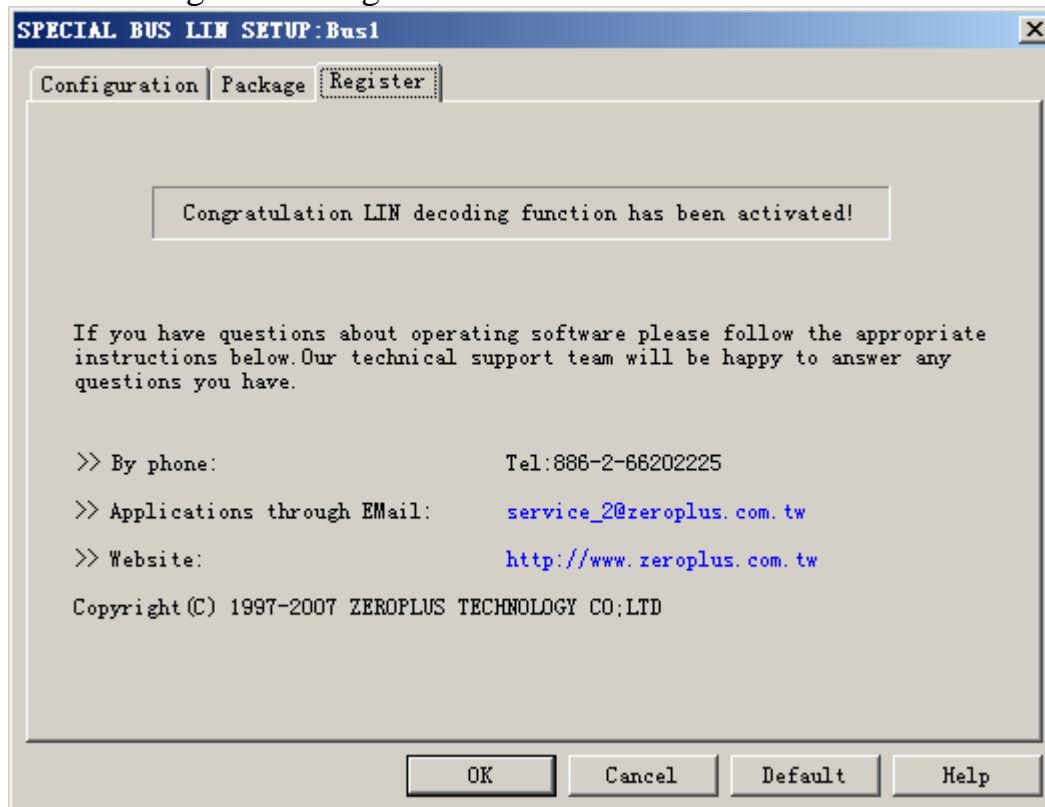
The default colors are as image below. Once Error is occurred, the warning color returns red.

LINBUS Package Dialog Box



Package colors can be varied by user.

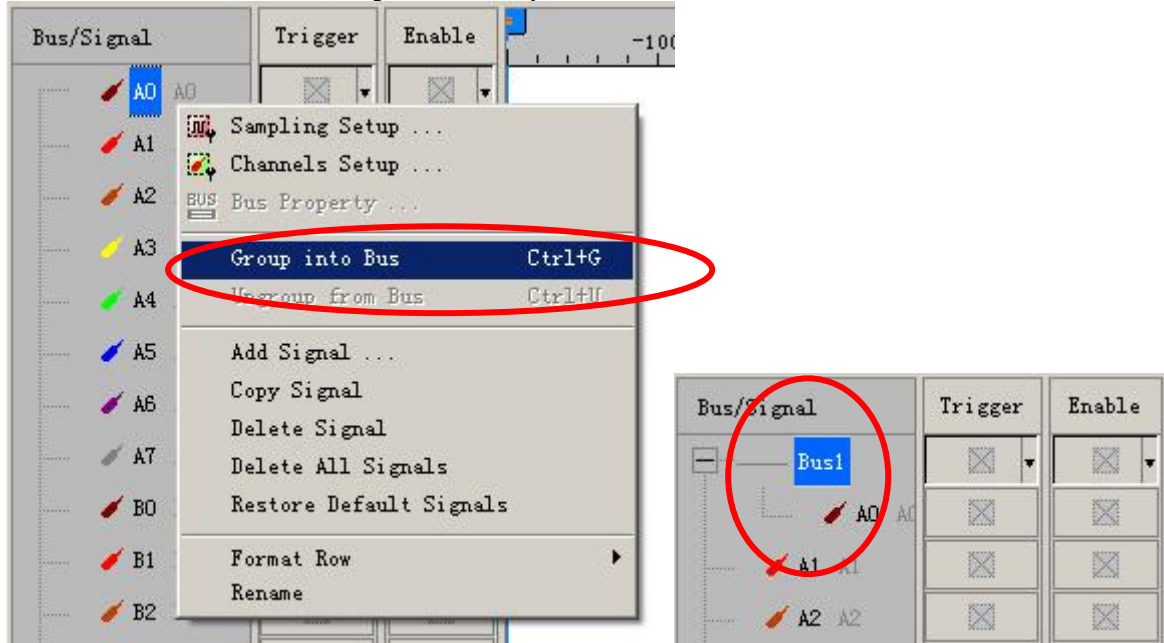
LINBUS Register Dialog Box



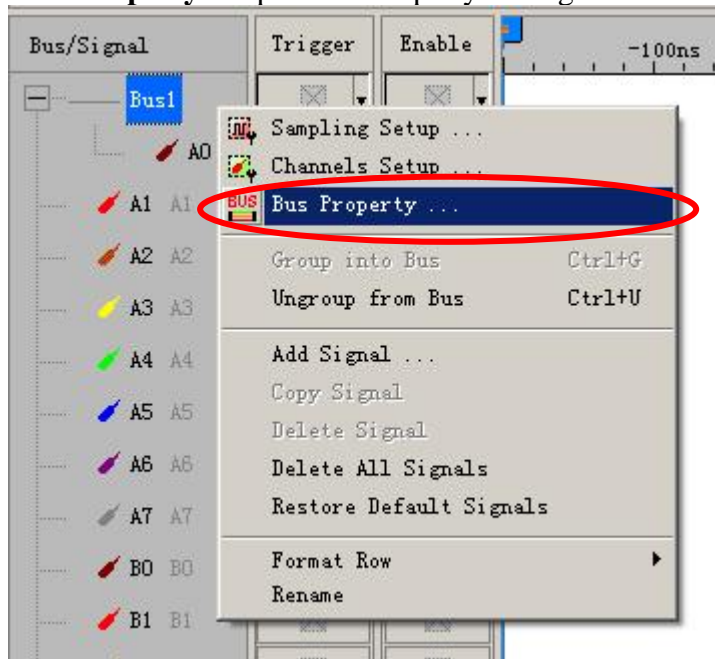
There is ZeroPlus company information written. If users have questions about software Operations, user can contact ZeroPlus by Telephone or Email.

3 Operating Instructions

STEP 1. At first, Group the unanalyzed channels into bus 1

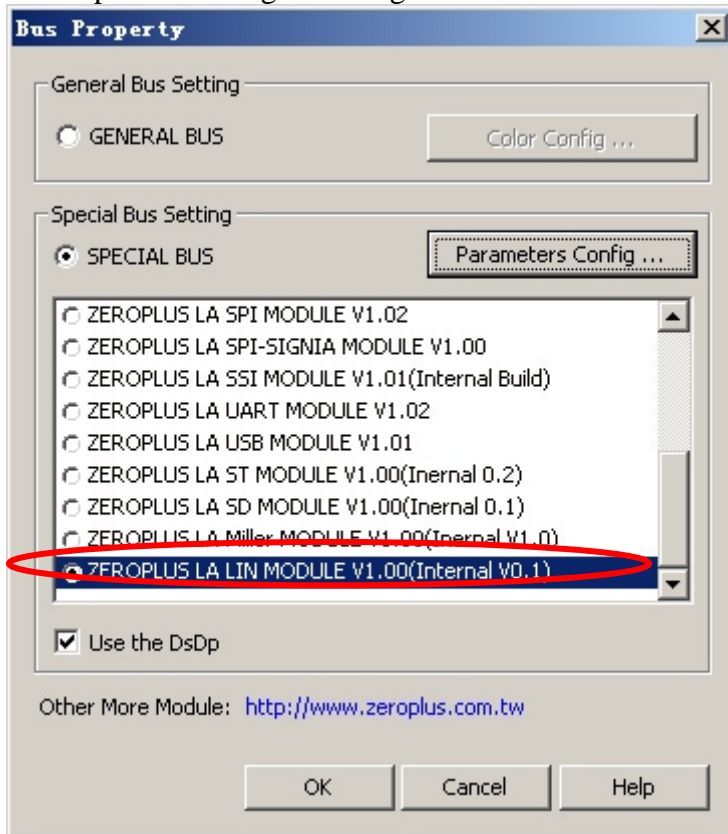


STEP 2. Select Bus1, then press the **Right Key** on mouse to list menu, next click the **Bus Property** to open Bus Property Dialog Box

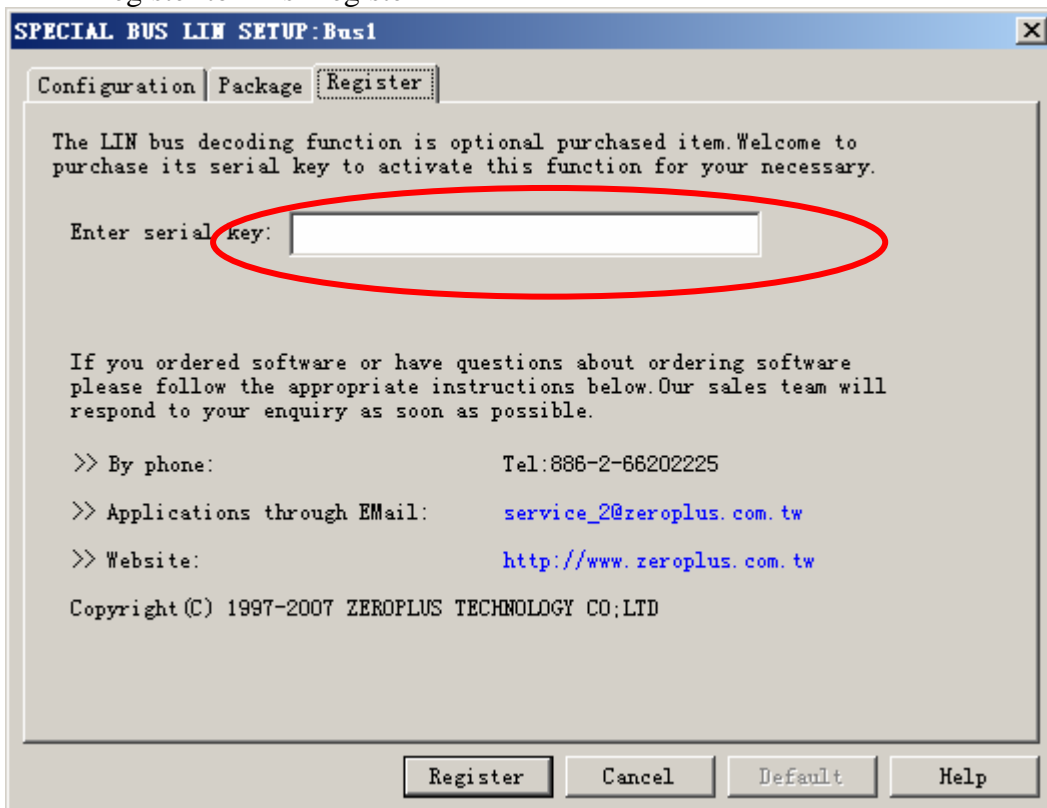


STEP 3. For Special Bus Parameter Configuration, select Special Bus, then choose **ZEROPLUS LA MODULE V1.00 (Internal V0.1)**. Next click "Parameter Configuration" to

open the configure dialogue box..

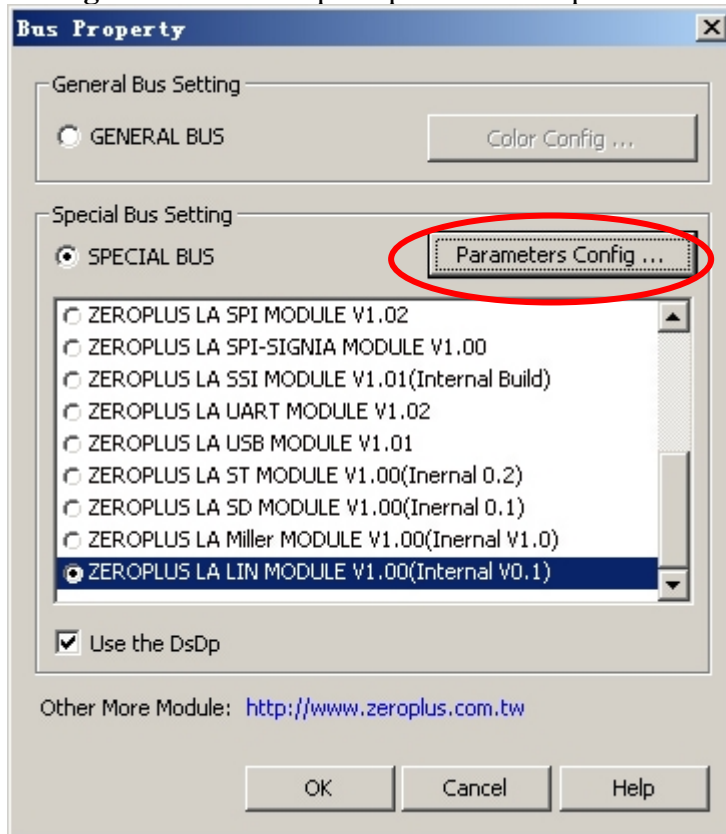


STEP 4. Register user information: type the serial key number of logic analyzer, then press Register to finish register

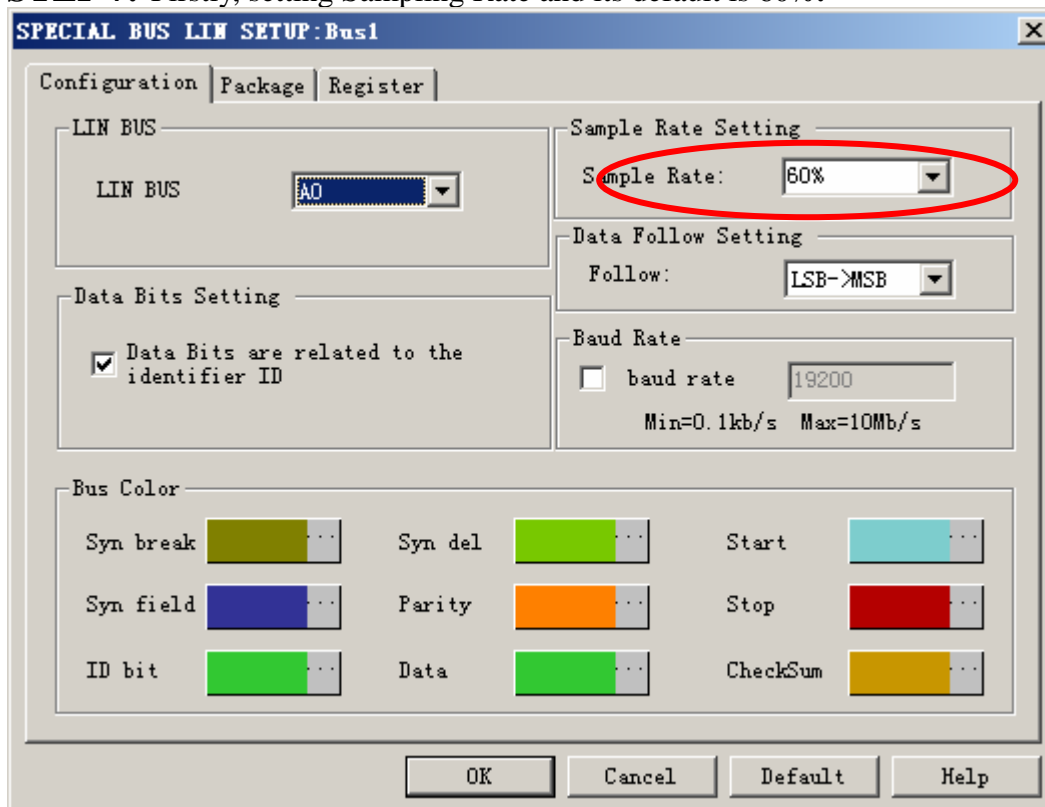


STEP 5.

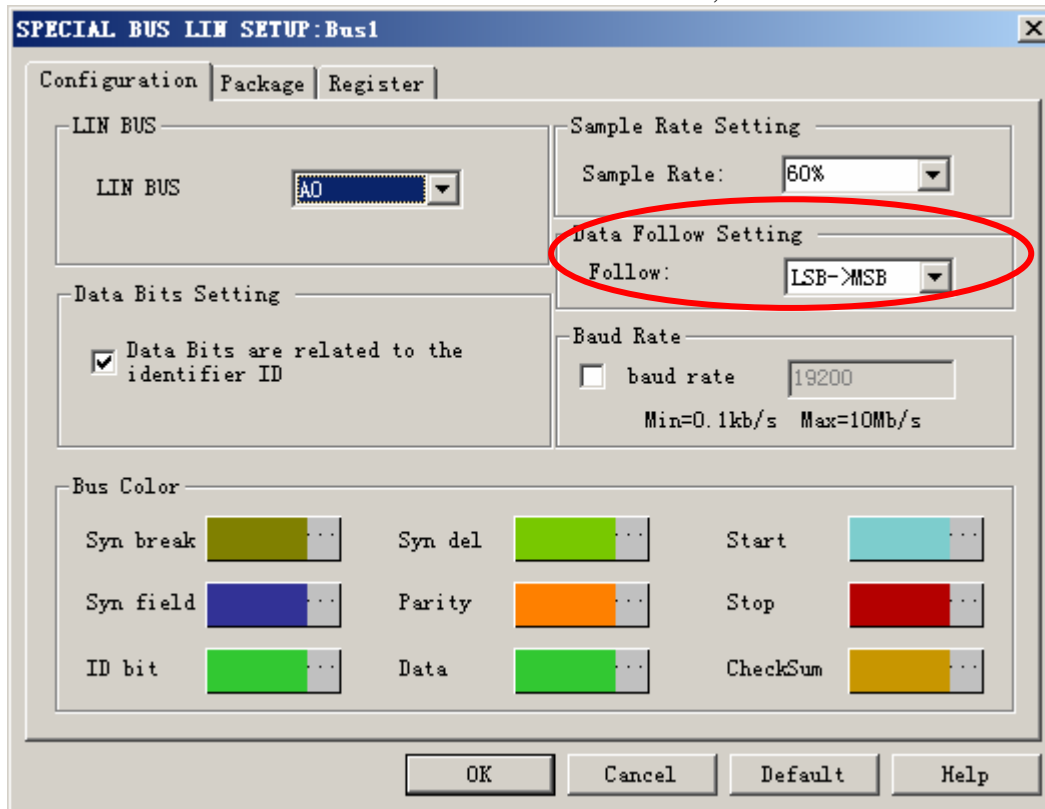
STEP 6. After completing Register, it turns to **Bus Property** dialogue box. Click “**Parameter Configuration**” to set up the parameter of special bus



STEP 7. Firstly, setting Sampling Rate and its default is 60%.

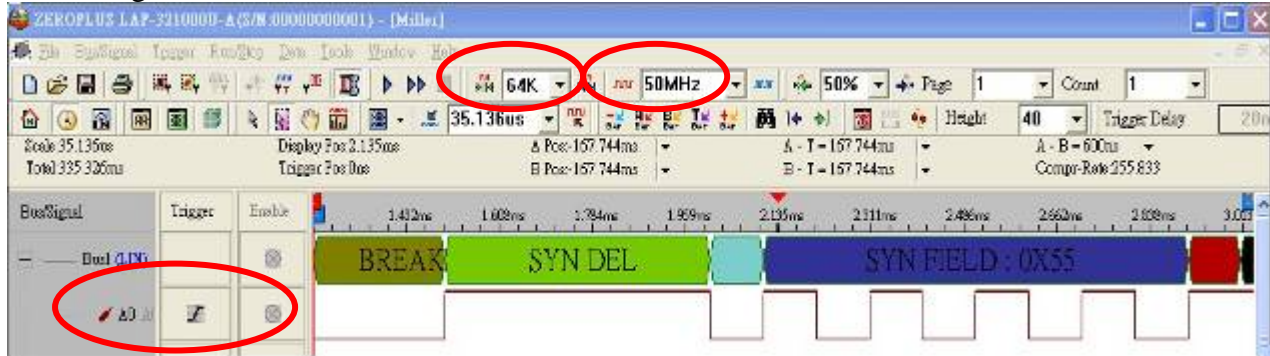


STEP 8. The default of Data Follow is MSB->LSB, user can choose the directions listed.



STEP 9. Following picture shows that the completion of bus decoding. The conditions are set as that CLK falling edge, Memory depth is 64K, Sampling Frequency is 50MHz and the compression is activated.

Decoding bus



Package list

