



孕龍科技股份有限公司
ZEROPLUS TECHNOLOGY CO.,LTD

Instrument Business Department

IIS Specification

Edition: 1.1

Content

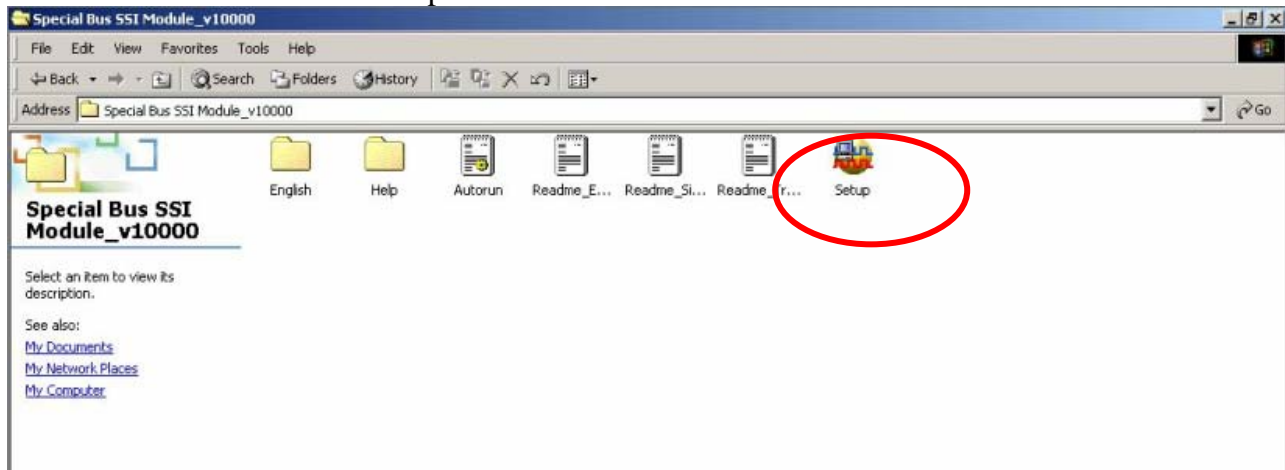
1 Software Installation.....	3
2. User Interface	7
3 Operating Instructions	9

1 Software Installation

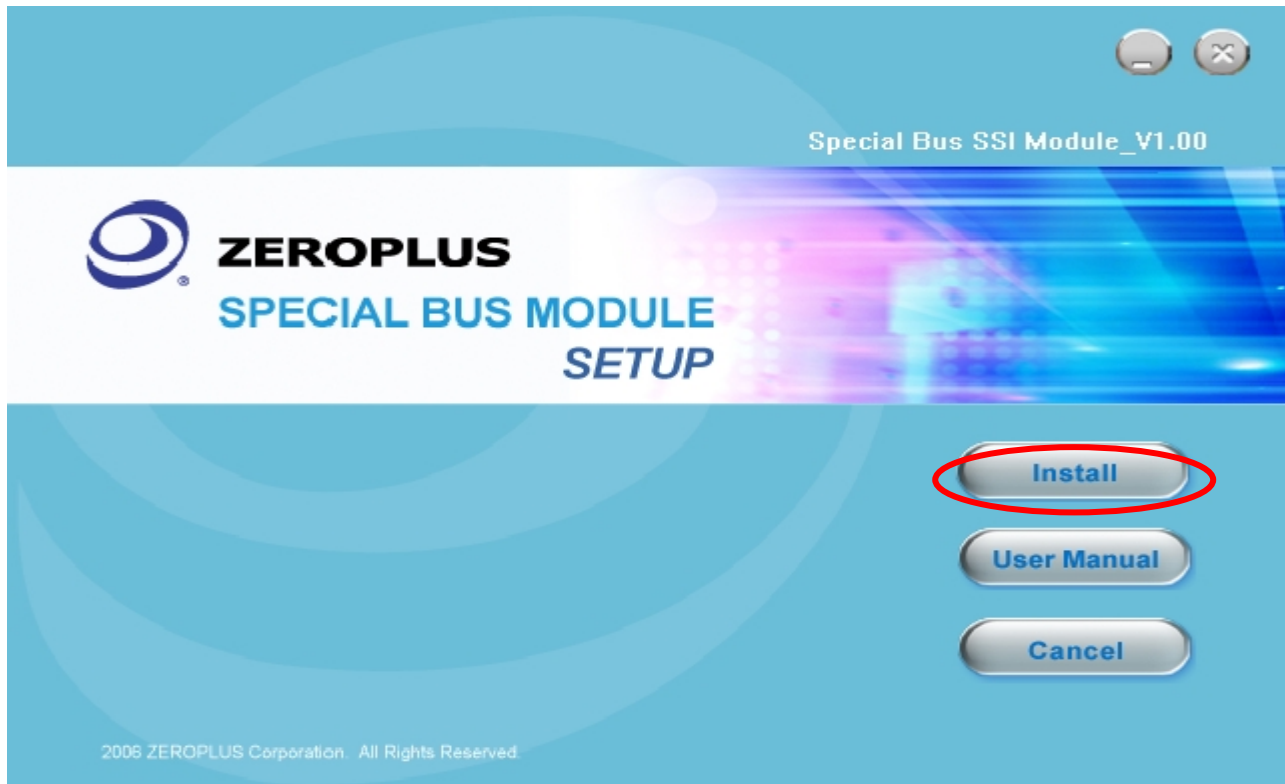
Please as the following steps to install the software.

※Remark: The installed steps for all Buses are the same , to follow the steps are ok, the below procedures are to install the SSI Bus for example, other Buses can take it for reference .

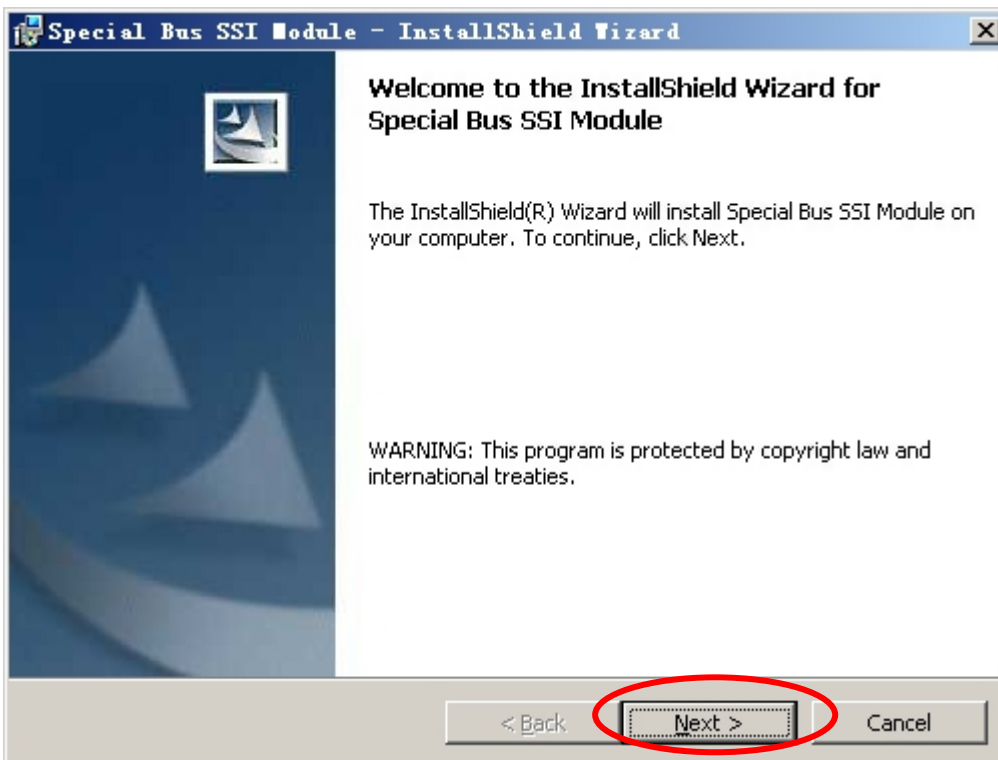
STEP 1. SSI Bus Module Setup .



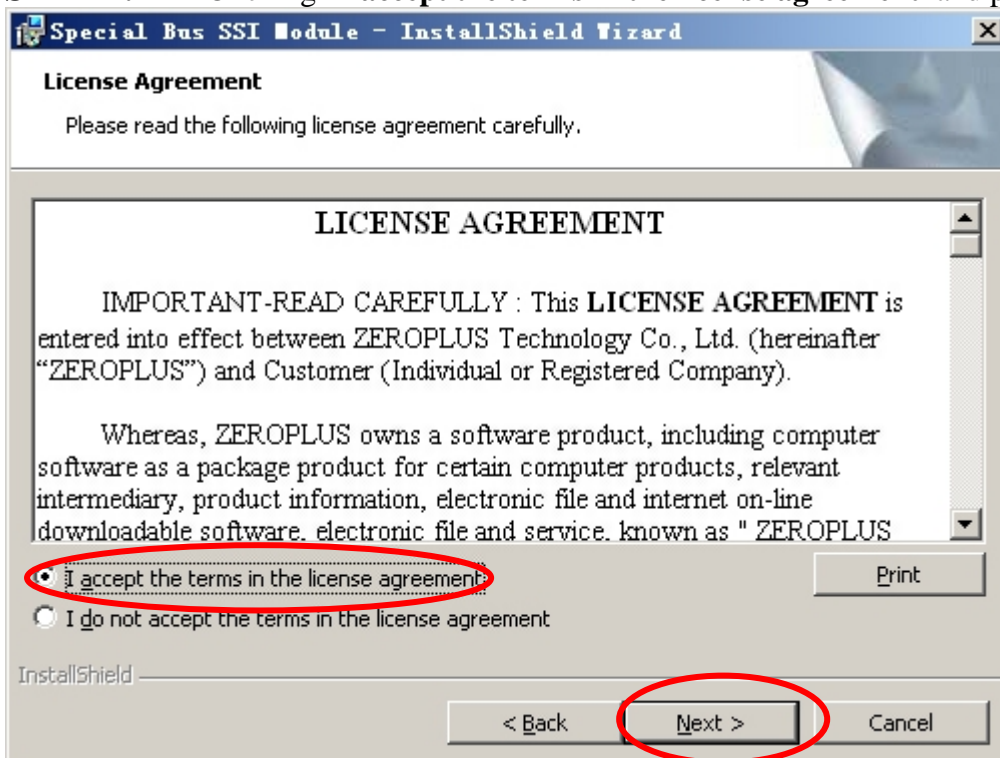
STEP 2. Click Install.



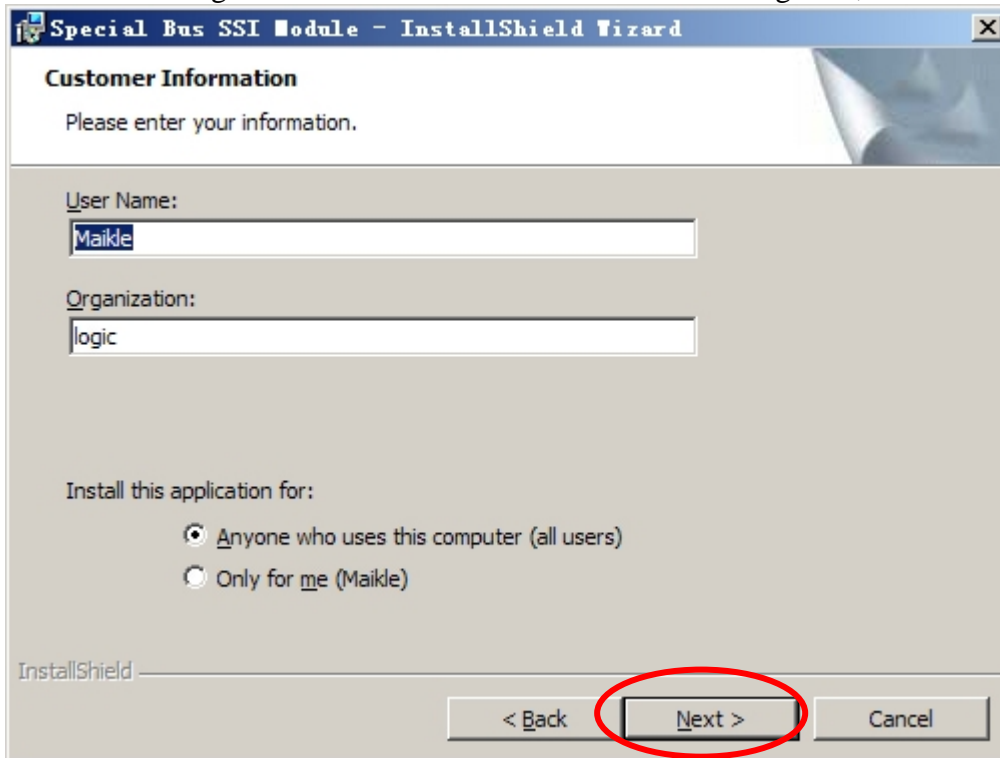
STEP 3. Click Next.



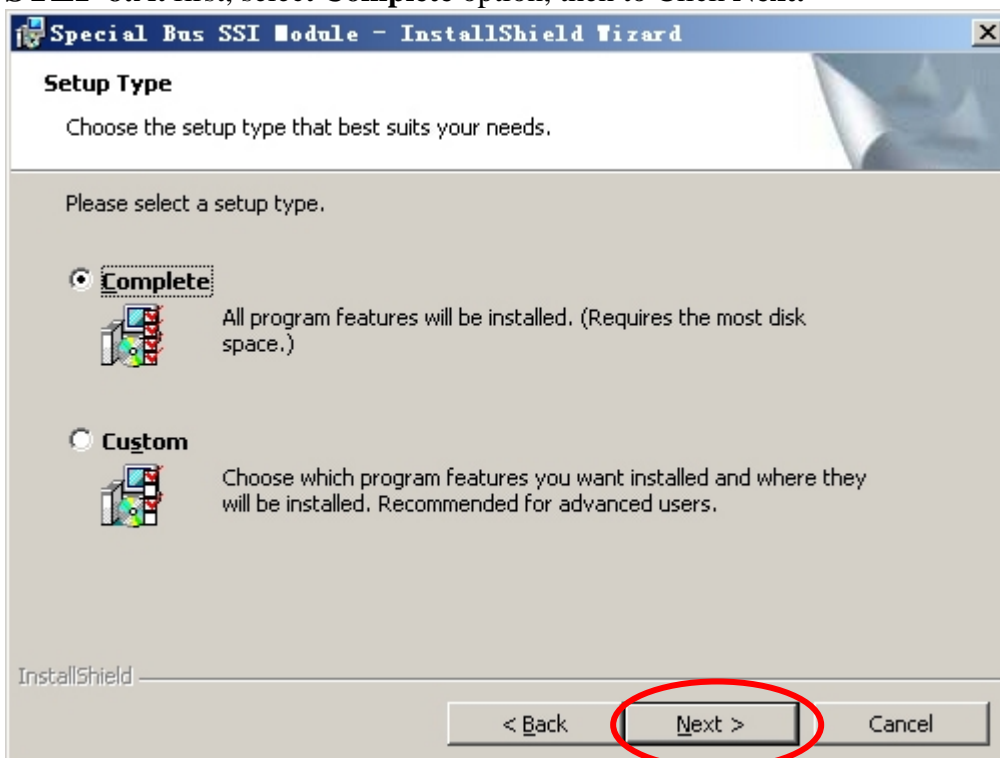
STEP 4. Clicking “I accept the terms in the license agreement” and pressing Next.



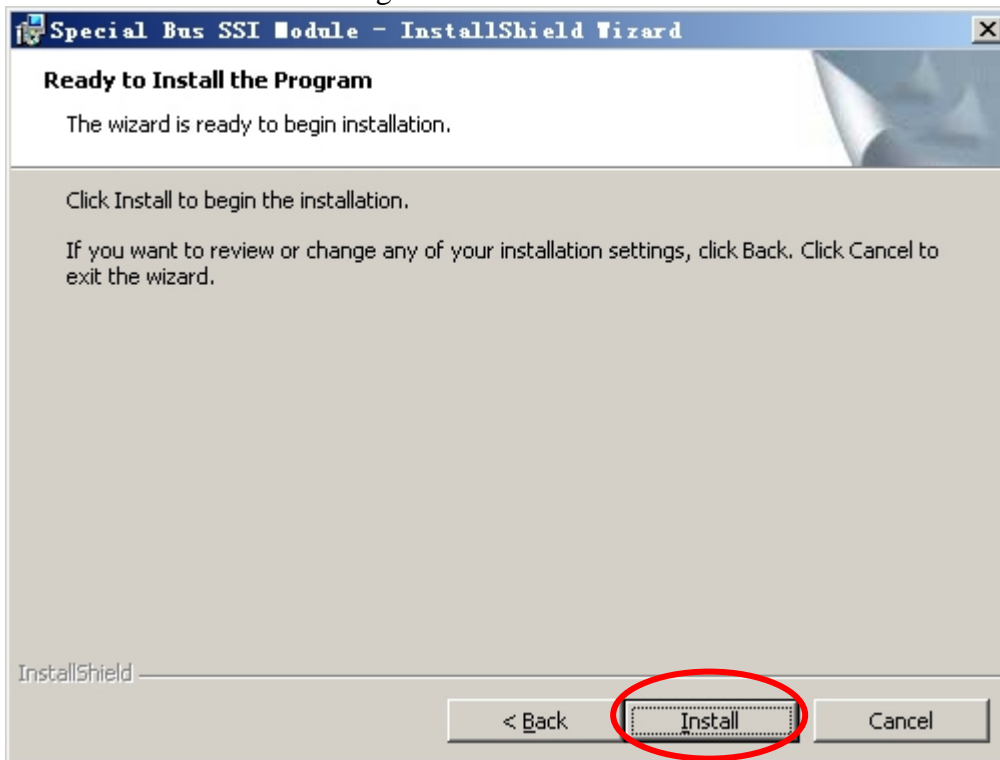
STEP 5. Filling the relative information in the below dialog box ,and to click **Next**.



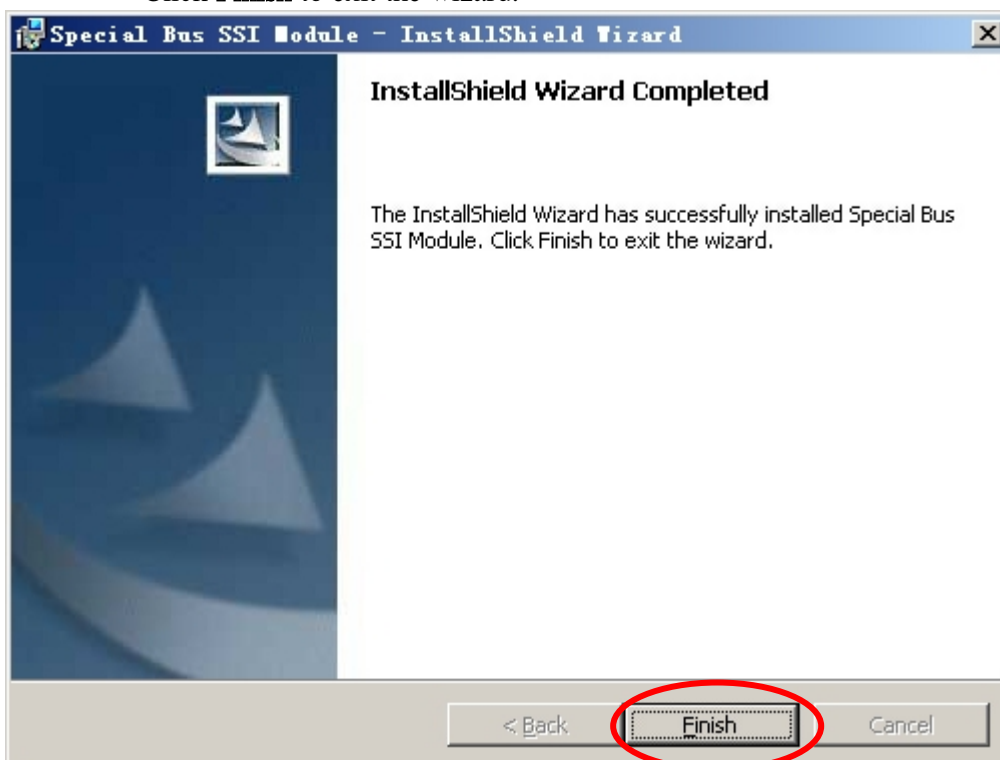
STEP 6. At first, select **Complete** option, then to Click **Next**.



STEP 7. Click **Install** to begin the installation.



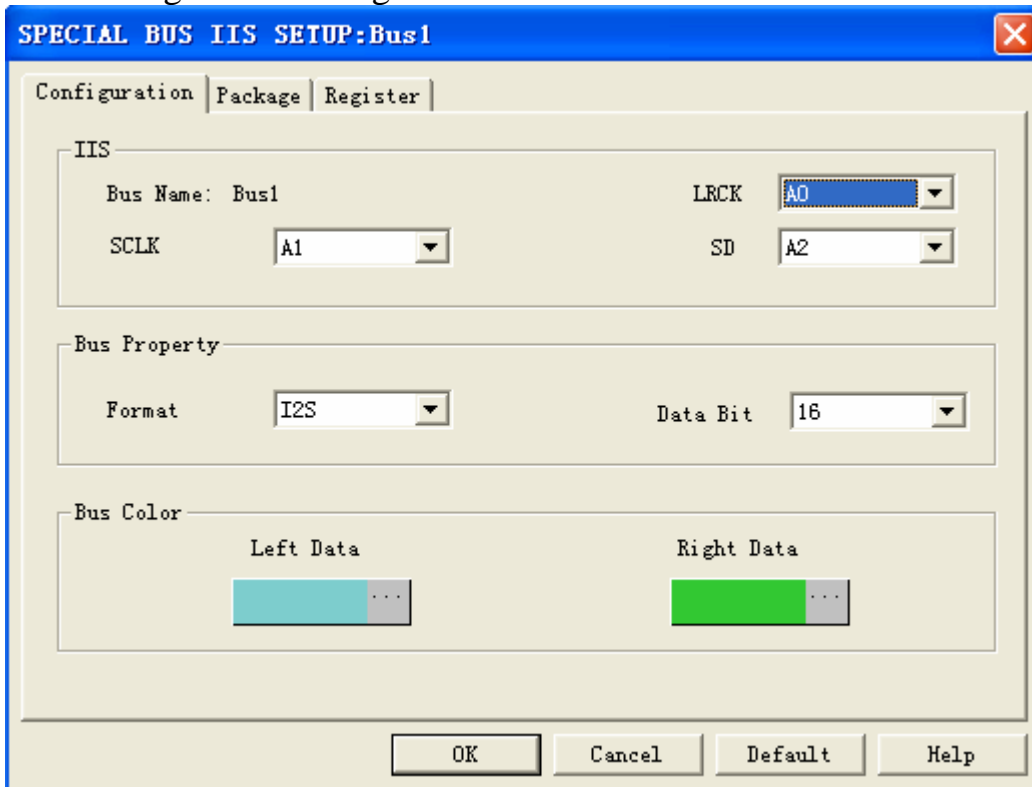
STEP 8. Click **Finish** to exit the wizard.



2. User Interface

Please refer to the below image about the **IIS BUS** setup.

IIS Configuration dialog box for Bus 1



IIS has three signal lines :

LRCK: the default is A0.

SCLK: the default is A1.

SD: the default is A2.

Format Choice: There are three different formats, to choose the format will change the data coding's start position, the basic format is I2S. the general format is flush right format, the seldom format is flush left format, so the default is I2S.

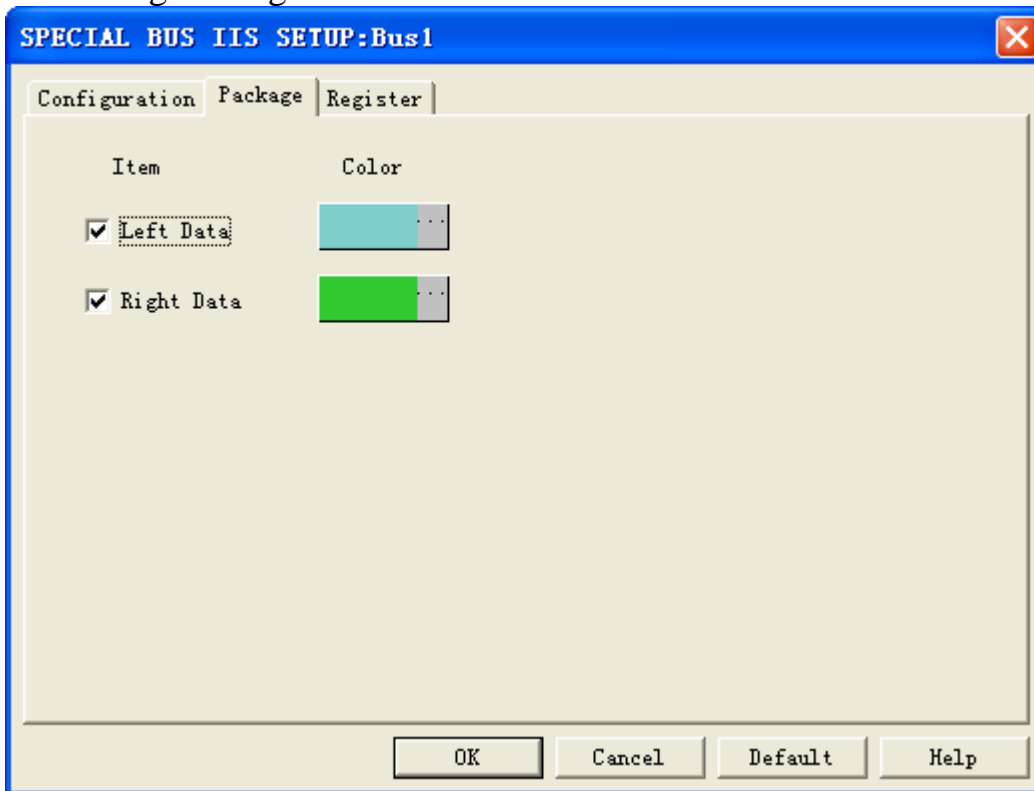
Data Bit: the default has four kinds: 16, 20, 24, 32BIT. According to the start position, the default is 16BIT.

Bus Color:

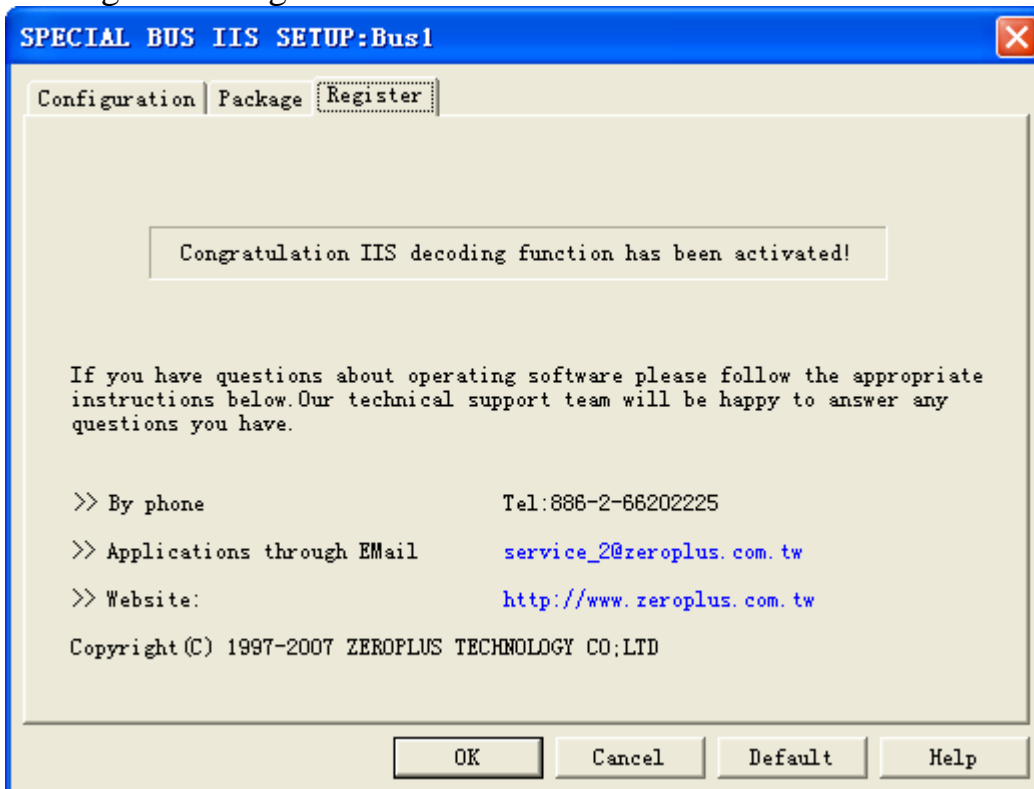
Left Data: the default is blue

Right Data: the default is green

IIS Package dialog box



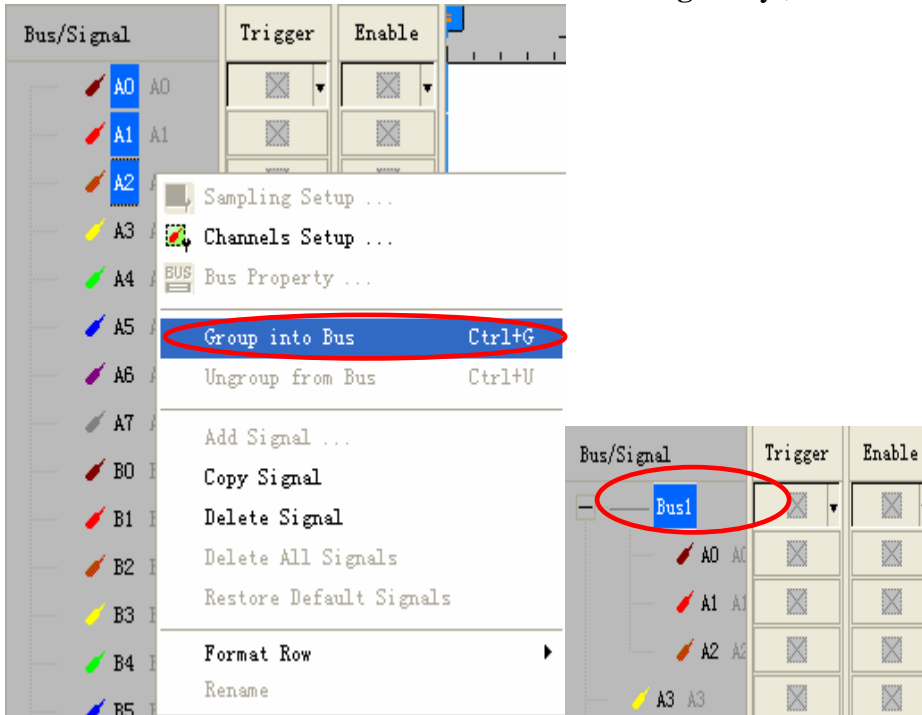
IIS Register dialog box



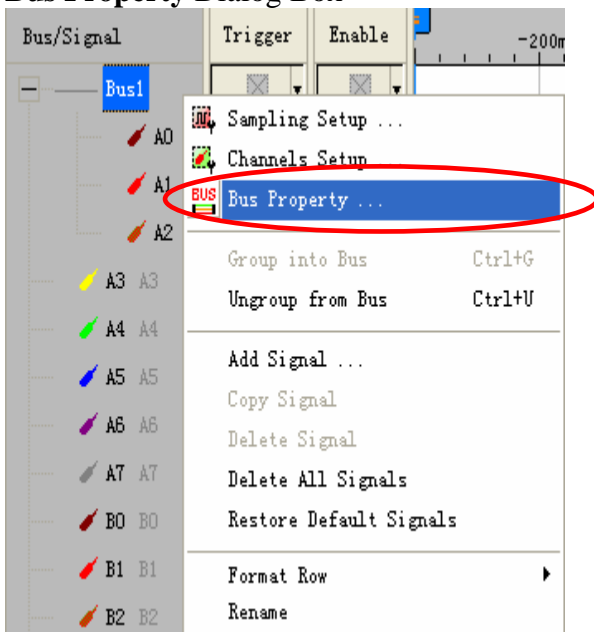
In the register part , our company provides the detail information , if you have any questions please call by phone or see about the website.

3 Operating Specification

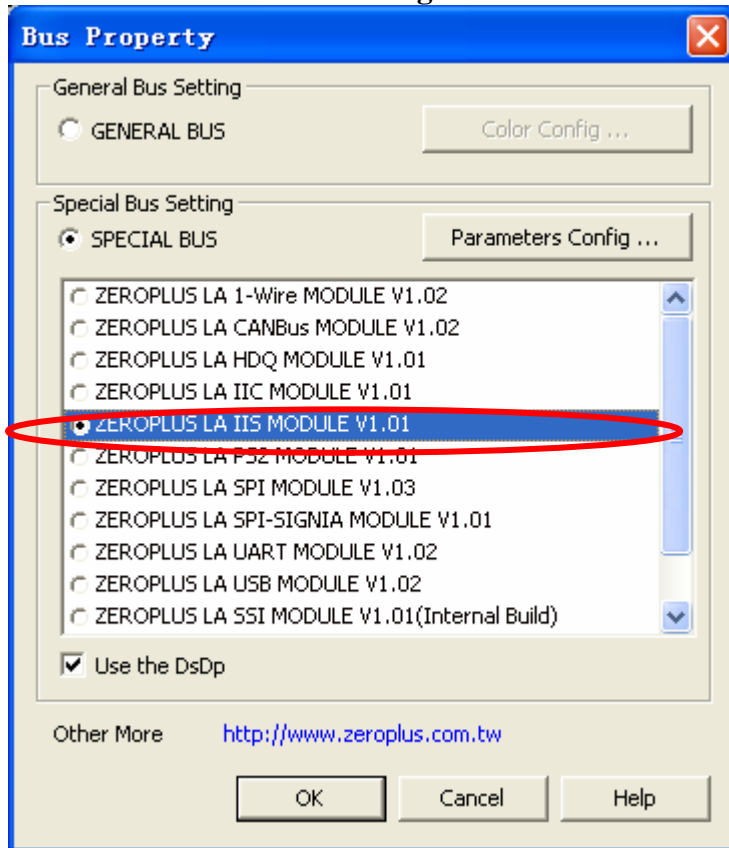
STEP 1. To choose the channel name and click **Right** key ,then to choose **Group into Bus**.



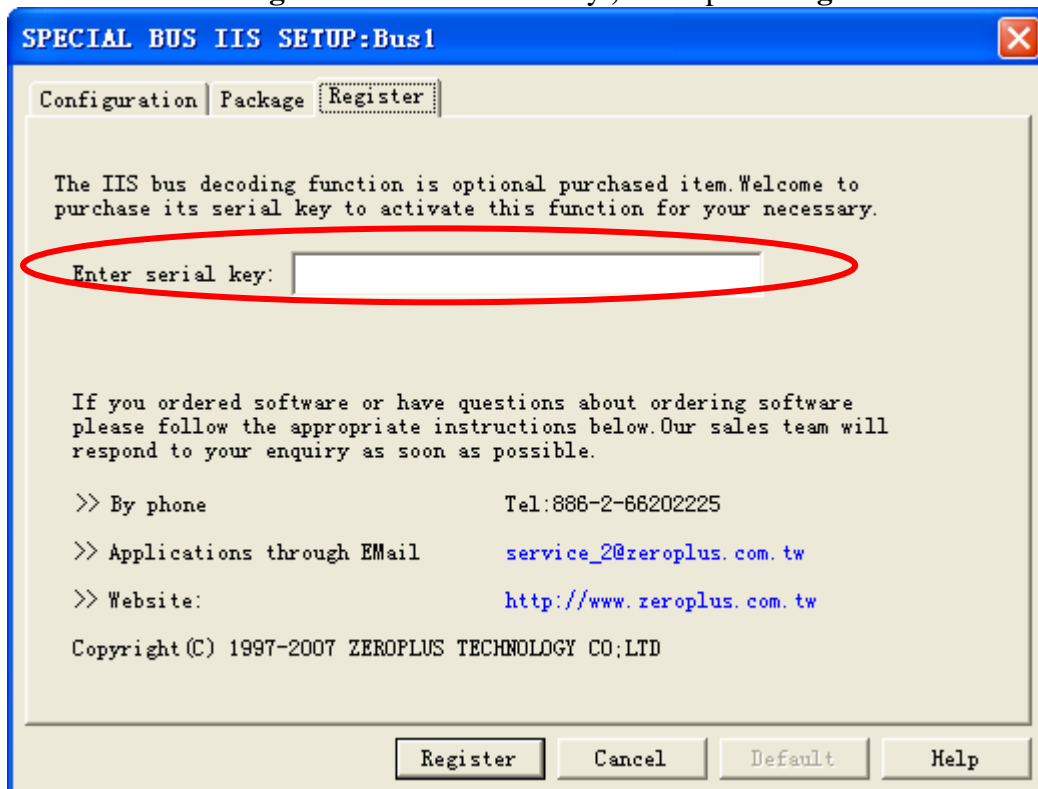
STEP 2. Select **Bus1**, to press the **Right** key on the mouse , then to click the **Bus Property** to open **Bus Property** Dialog Box



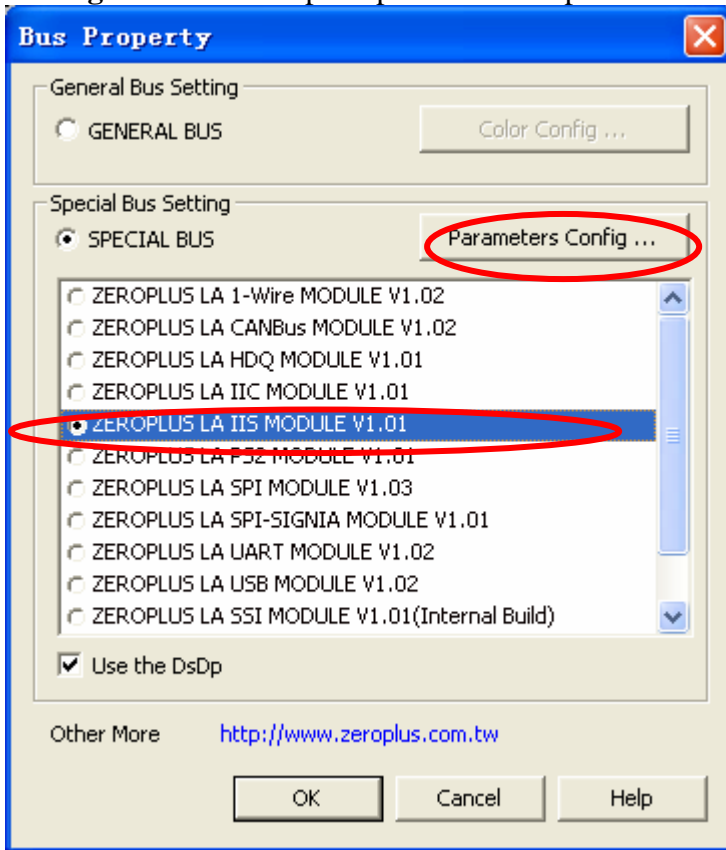
STEP 3. Special Bus setting , toclick Special Bus and choose **ZEROPLUS LA IIS MODULE V1.01**, then to click **Parameters Configuration**.



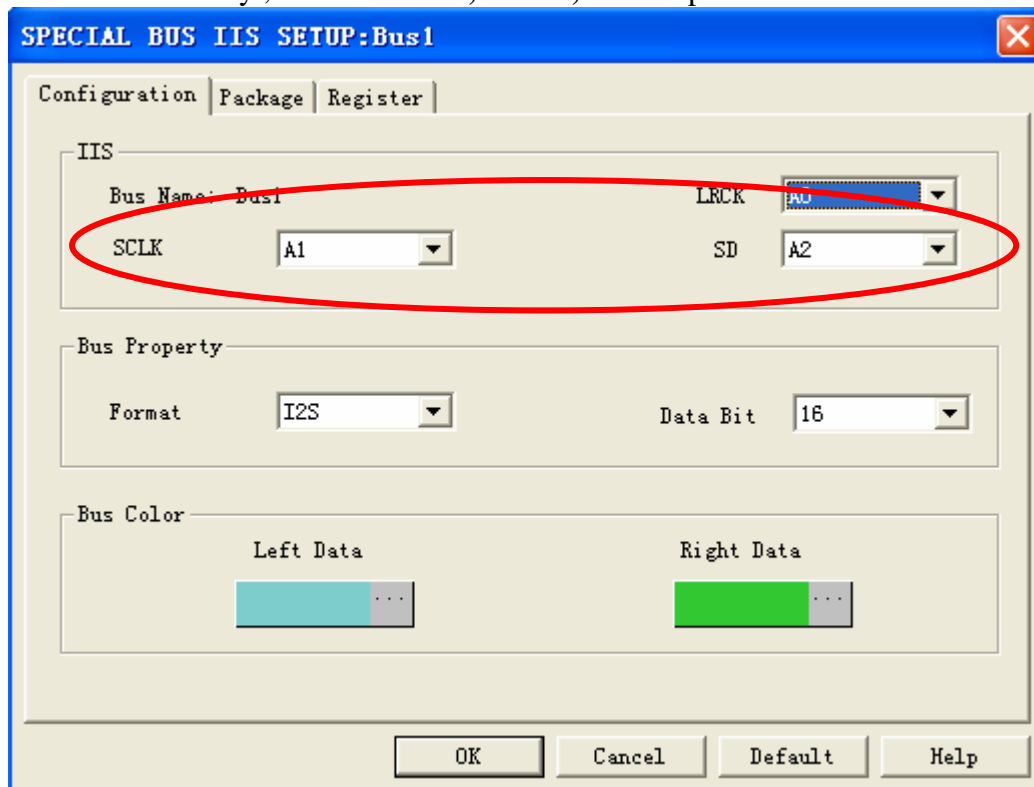
STEP 4. Click **Register** and enter serial key ,and to press **Register** .



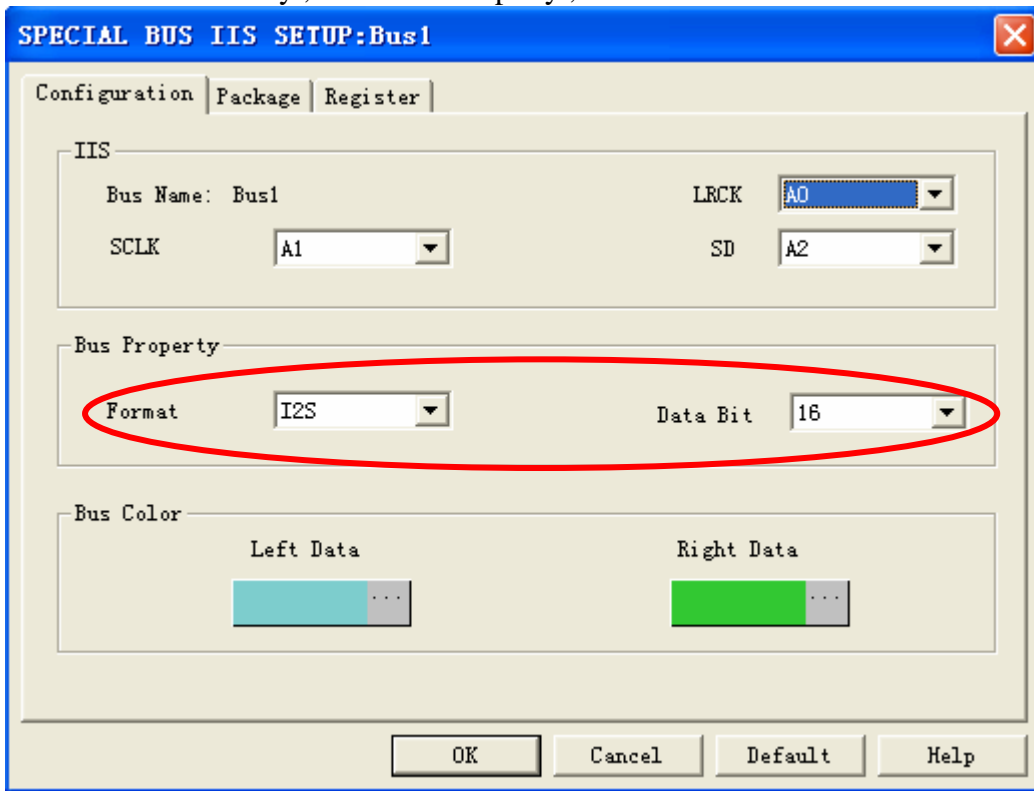
STEP 5. After completing Register, it turns to **Bus Property** dialogue box, then press **Parameter Configuration** to set up the parameter of Special Bus .



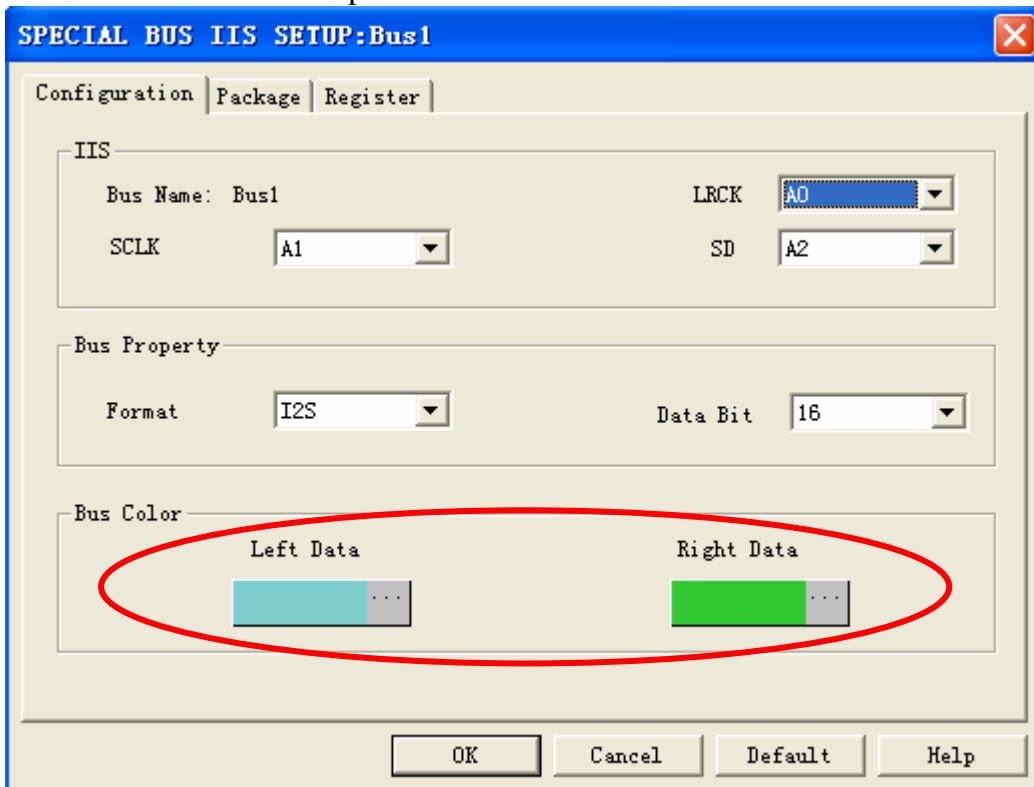
STEP 6. Firstly ,IIS Bus **LRCK, SCLK, SD** setup.



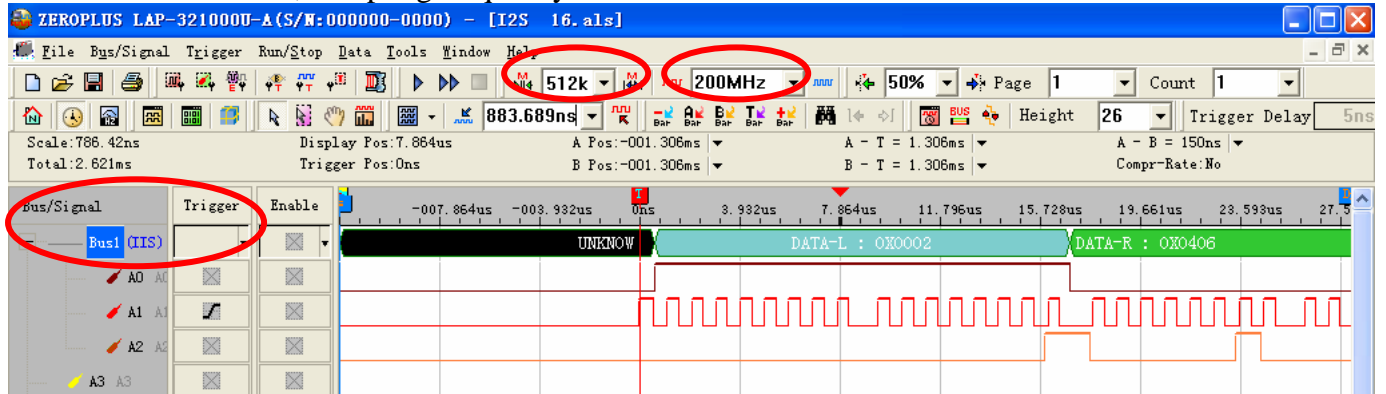
STEP 7. Secondly ,In the Bus Property ,to choose Bus **Format** and **Data Bit** Setup.



STEP 8. Bus Color setup.



STEP 9. The below is the Bus coding finished picture, and to set up: the A1 is the rising edge trigger, the RAM size is 512K, Sampling frequency is 200MHz.



The below pictures are packet list and waveform display

